

# Floor Type Cooking Range



# 000135B



### FEG-7C

#7001/3Electric standing griddle

Packing size (mm)	900*900*1000
Dimension(mm)	700*750*800+130
NW(kg)	100
G/W(kg)	118
Power(kW)	9
Volt/V	380V-415V



### FEG-9C

#900J/3Electric standing griddle

Packing size (mm)	1000*910*1130
Dimension(mm)	800*900*820+130
NW(kg)	113
G/W(kg)	133
Power(kW)	12
Volt/V	380V-415V



### FEG-7E0

#700 Electric standing griddle With ele Oven

Packing size (mm)	900*900*1000
Dimension (mm)	700*750*800+130
NW(kg)	139
G/W(kg)	157
Power(kW)	9+6
Volt/V	380V-415V



### FEG-9E0

#900 Electric standing griddle With ele Oven

Packing size (mm)	1000*910*1130
Dimension(mm)	800*900*820+130
NW(kg)	177
G/W(kg)	197
Power(kW)	12+6
Volt/V	380V-415V

### FGP- 9C

#900 4KSS

Gas Standing Solid-top With Cabinet

Packing size (mm)	1000*910*1130
Dimension(mm)	800*900*820+130
NW(kg)	90
G/W(kg)	100
Power(kW) Pa	28 LPG2800Pa

### FGP- 7C

#700 Gas Standing Solid-top With Cabinet

Packing size (mm)	900*900*1000
Dimension (mm)	700*750*800+130
NW(kg)	70
G/W(kg)	86
Power(kW)	12
Pa	LPG2800Pa

### FGG-9C

#9001 /3Gas standing griddle

Packing size (mm)	1000*910*1130
Dimension(mm) N/W(kg)	800*900*820+130 115
G/W(kg) Power(kW) Pa	135 12 LPG2800Pa

### FGG-7C

#700 1 /3 tW P Gasstandinggriddle

Packing size (mm)	900*900*1000
Dimension(mm) N/W(kg)	700*750*800+130 100
G/W(kg) Power(kW) Pa	118 12 LPG2800Pa

### FGG^GO

J/3 Gas standing lava rocksridl With gas oven

Packing size (mm) Dimension (mm) N/W(kg) G/W(kg) Power(kW) Pa	1000*910*1130 800*900*820+130 178 198 12+5.8 LPG2800Pa
---------------------------------------------------------------	-----------------------------------------------------------------------

### FGG-7G0

1/3 Gas standing lava rocksridl With gas oven

Packing size (mm) Dimension(mm) N/W(kg) G/W(kg) Power(kW) Pa	900*900*1000 700*750*800+130 148 166 12+5.8 LPG2800Pa
--------------------------------------------------------------	----------------------------------------------------------------------

### FGP^GO^

#900S Gas Standing Solid-top stove with gas oven

Packing size (mm) Dimension(mm) N/W(kg) G/W(kg) Power(kW) Pa	1000*910*1130 800*900*820+130 90 110 28+6 LPG2800Pa
--------------------------------------------------------------	--------------------------------------------------------------------

### FGP-7G0

#700 Gas Standing Solid-top stove with gas oven

Packing size (mm) Dimension (mm) N/W(kg) G/W(kg) Power(kW) Pa	900*900*1000 700*750*800+130 80 98 12+6 LPG2800Pa
---------------------------------------------------------------	------------------------------------------------------------------

## Floor Type Cooking Range



Packing size (mm) 1000\*910\*1130  
 Dimension(mm) 130  
 N/W(kg) G/W(kg) 800\*900\*82  
 Power(kW) Volt/V 0+130  
 121  
 141  
 17  
 380-415V

Dimension(mm) 110  
 N/W(kg) G/W(kg) 110  
 Power(kW) 128  
 Volt/V 14  
 380-415V

#900-Sh ele oven

Packing size (mm) 1000\*910\*1130  
 Dimension(mm) 130  
 N/W(kg) G/W(kg) 800\*900\*82  
 Power(kW) Volt/V 0+130  
 182  
 202  
 17+8 380-415V

1000\*900\*1000 750\*800.130

N/W(kg) 178  
 G/W(kg) 178  
 Power(kW) 14+6  
 Volt/V 380-415V

FGS-74GE0^

120\*930\*1000  
 Packing size (mm) 700\*800+130  
 Dimension(mm) N/W(kg) [6+5+5.8  
 G/W (kg)  
 Power(kW) PG2800Pa/380-415V

10\*1130  
 Packing size (mm) 1200.800\*820.130

Dimension(mm) 195  
 N/W(kg) G/W(kg) 220  
 Power(kW) Pa/V 24+6+5.8  
 LPG2800Pa/380V-415M



N/W(kg) 141  
 G/W(kg) 17  
 Power(kW) LPG28  
 Pa 00Pa

900\*900\*1000  
 S 700\*800\*300

N/W(kg) 128  
 G/W(kg) 14  
 Power(kW) LPG28  
 Pa 00Pa

FGMGO...

1000\*910\*1130

J 800\*900\*820

N/W(kg) 182  
 G/W(kg) 202  
 Power(kW) 17+6  
 Pa LPG28

FGB ---A

1000

Packing size (mm) 700\*750\*80  
 Dimension(mm) 0+130  
 N/W(kg) G/W(kg) 160  
 power(kW) Pa 178  
 14+6  
 LPG2800Pa

FGS^4GG0 ----

#700A

120\*930\*1000

Packing size (mm) 700  
 Dimension(mm) 1050\*700\*800  
 N/W(kg) G/W(kg) 180  
 power(kW) Pa 200  
 16+5+6  
 LPG2800Pa

FGS^4GG0

Packing size (mm) 820\*130

200  
 225 24+6+6  
 Dimension(mm) / LPG2800Pa  
 N/W(kg) G/W(kg)  
 Power(kW) Pa



<b>FGM-7C</b>	
<b>#700</b>	
<b>Gas standing bain marie</b>	
Packing size (mm)	900*900*1000
Dimension(mm)	700*750*800+130
N/W(kg)	73
G/W(kg)	93
Power(kW)	6
Pa	LPG2800Pa
<b>FGM-9C</b>	
<b>#900</b>	
<b>Gas standing bain marie</b>	
Packing size (mm)	1000*910*1130
Dimension(mm)	800*900*820+130
N/W(kg)	83
G/W(kg)	103
Power(kW)	6
Pa	LPG2800Pa



<b>FEM-7C</b>	
<b>#700</b>	
<b>Electric standing bain marie</b>	
Packing size (mm)	900*900*1000
Dimension(mm)	700*750*800+130
N/W(kg)	70
G/W(kg)	88
Power(kW)	5
Volt/V	380V-415V
<b>FEM-9C</b>	
<b>#900 Electric standing bain marie</b>	
Packing size (mm)	1000*910*1130
Dimension(mm)	800*900*820+130
N/W(kg)	80
G/W(kg)	100
Power(kW)	6
Volt/V	380V-415V



<b>FEN-7C</b>	
<b>#700 Electric standing noodle cooker</b>	
Packing size (mm)	1000*910*1130
Dimension(mm)	800*900*820+130
N/W(kg)	80
G/W(kg)	100
Power(kW)	6
Volt/V	380V-415V



Packing size (mm)	900*900*1000
Dimension(mm)	700*750*800+130
N/W(kg)	80
G/W(kg)	100
Power(kW)	12
Volt/V	380V-415V

<b>FEN-9C</b>	
<b>#900 Electric standing noodle cooker</b>	
Packing size (mm)	1000*910*1130
Dimension(mm)	800*900*820
N/W(kg)	0+130
G/W(kg)	73
Power(kW)	91
Volt/V	18
	380V-415V

<b>FEF-7C</b>	
<b>#700 Electric standing deep fat fryer</b>	
Packing size (mm)	900*900*1000
Dimension(mm)	700*750*800+130
N/W(kg)	80
G/W(kg)	98
Power(kW)	12
Volt/V	380V-415V



<b>FEF-9C</b>	
<b>#900 Electric standing deep fat fryer</b>	
Packing size (mm)	1000*910*1130
Dimension(mm)	800*900*820
N/W(kg)	0+130
G/W(kg)	90
Power(kW)	110
Volt/V	24
	380V-415V

<b>FGF-7C</b>	
<b>#700 Gas standing deep fat fryer</b>	
Packing size (mm)	900*900*1000
Dimension(mm)	700*750*800
N/W(kg)	0
G/W(kg)	+130
Power(kW)	85
MPa	103
	31
<b>FGF-9C</b>	
<b>#900 Gas standing deep fat fryer</b>	
Packing size (mm)	1000*910*1130
Dimension(mm)	800*900*820
N/W(kg)	0+130
G/W(kg)	93
Power(kW)	113
Pa	31
	LPG2800Pa



<b>FGN-7C</b>	
<b>#700 Gas standing noodle cooker</b>	
Packing size (mm)	900*900*1000
Dimension(mm)	700*750*800
N/W(kg)	+130
G/W(kg)	85
Power(kW)	105
Pa	22
	.PG2800Pa
<b>FGN-9C</b>	
<b>#900 Gas standing noodle cooker</b>	
Packing size (mm)	1000*910*1130
Dimension(mm)	800*900*820
N/W(kg)	0+130
G/W(kg)	85
Power(kW)	105
Pa	22
	LPG2800Pa



## Floor Type Cooking Range

### FGS-74G0

#700

Gas stove, 4 burners with Gas oven

Packing size (mm) 900\*900\*1000  
 Dimension(mm) 700\*750\*800  
 N/W(kg) G/W(kg) +130  
 Power(kW) Pa 130  
 148  
 16+6

FGS-94G0 LPG2800  
 Pa

#900 Gas stove, 4 burners

with Gas oven 1000\*910\*1130  
 Packing size (mm) 130  
 800\*900\*82  
 Dimension (mm) 0+13  
 N/W(kg) G/W(kg) 145  
 Power(kW) Pa 165  
 16+6  
 LPG2800Pa



### FGS-74E0

#700

Gas stove, 4 burners with electric oven

Packing size (mm)	900*900*1000
Dimension(mm)	700*750*800+130
N/W(kg)	125
G/W(kg)	143
Power(kW)	16+6
Volt/V	LP2800Pa/380-415V

FGS-94E0 #900

Gas stove, 4 burners with electric oven

Packing size (mm) 1000\*910\*1130  
 Dimension (mm) 140  
 165  
 N/W(kg) 24+6  
 G/W(kg) LPG2800Pa/380-  
 415V  
 Power(kW)  
 Pa/V



### FGS-76G0

#700 Gas stove, 6 burners

with Gas oven 1120\*930\*1000  
 Packing size (mm) 1050\*700\*800+1  
 Dimension(mm) 30 175  
 N/W(kg) G/W(kg) 193  
 Power(kW) Pa 24+6  
 LPG2800Pa



### FGS-76E0

#700

Gas stove, 6 burners with electric oven

Packing size (mm) 1120\*930\*1000  
 Dimension(mm) 170  
 188  
 N/W(kg) 24+6  
 G/W(kg) LPG2800Pa/380-  
 415V  
 Power(kW)



### FGS-96G0

#900 Gas stove, 6 burners with Gas oven

Packing size (mm) 1300\*1050\*1060  
 Dimension(mm) 1200\*900\*820+130  
 195  
 N/W(kg) G/W(kg) 215  
 Power(kW) Pa 24+6  
 LPG280  
 0Pa



### FGS-96E0

#900

Gas stove, 6 burners with electric oven

Packing size (mm) 1300\*1050\*1060  
 Dimension(mm) 0  
 215  
 N/W(kg) 24+6  
 G/W(kg) LPG2800Pa/380-  
 415V  
 Power(kW)  
 Pa/V

### FEC-94E0-A

#900 K

Electric 4-Hot Plates Range With ele Oven

Packing size (mm) 1000\*910\*1130  
 0  
 Dimension(mm) 800\*900\*820+  
 130  
 N/W(kg) G/W(kg)  
 Power(kW) Volt/V 129  
 149  
 16+6  
 380V-415V

### FEC-96E0-A

#900 Electric 6-Hot Plates Range

With ele Oven  
 Packing size (mm) 1280\*1050\*1060  
 1200\*900\*82  
 Dimension (mm) 0+130  
 N/W(kg) G/W(kg) 179  
 Power(kW) Volt/V 199  
 24+6  
 380V-415V



### FEC-74E0

#700

Electric 4-Hot Plates Range With ele Oven

Packing size (mm)	1000*910*1130
Dimension(mm)	700*750*800+130
N/W(kg)	108
G/W(kg)	136
Power(kW)	380V-415V
Volt/V	

FEC-94E0 #900 Electric 4-Hot Plates Range With ele

### FEC-96E0

#900 Electric 6-Hot Plates Range With ele

Oven		Oven	
Packing size (mm)	1000*910*1130	Packing size (mm)	1280*1050*1060
Dimension(mm)	800*900*820+130	Dimension(mm)	1200*900*820+130
N/W(kg)	129	N/W(kg)	179
G/W(kg)	149	G/W(kg)	199
Power(kW)	16+6	Power(kW)	24+6
Volt/V	380V-415V	Volt/V	380V-415V





# TABLE-TOP COOKING RANGE

## TGS-64

A

### Table Type Gas Stove-4 Burners

Packing size (mm)	680*730*550
Dimension (mm)	575*615*460+50
N/W(kg)	45
G/W(kg)	58
Power(kW)	16
	LPG2800Pa

## TGS-66



### 6 Table Type Gas Stove-6 Burners

Packing size (mm)	960*730*550
Dimension (mm)	860*615*460+50
N/W(kg)	50
G/W(kg)	63
Power(kW)	24
	LPG2800Pa

Power(kW)  
Pa

## TGG-60



### Table Type Gas Griddle

Packing size (mm)	730*740*550
Dimension (mm)	600*615*460+50
N/W(kg)	38
G/W(kg)	41
Power(w)	8.2
	LPG2800Pa

Pa

## TEG-60



### Table Type Electric Griddle

Packing size (mm)	720*740*450
Dimension (mm)	600*600*350+50
N/W(kg)	35
G/W(kg)	48
Power(w)	5
	220V-240V

Volt/V

## TEC-60



### ZTEC-64 Table Type 4-Hot

<b>Plates Range</b>	
Packing size (mm)	720*700*410
Dimension (mm)	600*600*350+50
N/W(kg)	21
G/W(kg)	34
Power(kW)	7
Volt/V	220V-240V

## Table-top Cooking Range



## Table-top Cooking Range



**TGB-60**



Table Type Gas Lava Rock Broiler

Packing size (mm)	730*740*550
Dimension(mm)	600*615*460+50
N/W(kg)	55
G/W(kg)	14
Power(kW)	LPG2800Pa
Pa	

**TEB-60**



Table type Electric Lava Rock Broiler

Packing size (mm)	730*740*550
Dimension(mm)	600*600*350+50
N/W(kg)	35
G/W(kg)	38
Power(kW)	7.2
Pa	220V-240V

**TEM-60**



Table Type Electric Bain Marie

Packing size (mm)	730*740*550
Dimension(mm)	700*600*350+50
N/W(kg)	21
G/W(kg)	34
Power(kW)	1.5
Pa	220V-240V
Power(w) Volt/V	

## Table-top Cooking Range



**TEM-4(M)**



Electric Bain Marie

Packing size (mm)	880*760*480
Dimension(mm)	800*670*405+50
N/W(kg)	13.8
G/W(kg)	24.6
Power(kW)	1.2
Volt/V	220V-240V

**TEC-402**



Electric 2-hot plate Cooker

Packing size (mm)	740*490*490
Dimension(mm)	400*670*405+50
N/W(kg)	16
G/W(kg)	27
Power(kW)	3.5
Volt/V	220V-240V

**TEG-403**

Table Type Gas Griddle

Packing size (mm)	740*490*490
Dimension(mm)	400*670*405+50
N/W(kg)	12
G/W(kg)	33
Power(kW)	3.5
Pa	LPG2800Pa



**TGF-60**



Table type Gas Fryer(2-Tank)

Packing size (mm)	730*740*550
Dimension(mm)	600*615*460+50
N/W(kg)	31
G/W(kg)	44
Power(kW)	12
Pa	LPG2800Pa

**TEF-60 4**

Table Type Electric Fryer (2-Tank)

Packing size (mm)	730*740*550
Dimension(mm)	600*600*350+50
N/W(kg)	24
G/W(kg)	37
Power(w)	2.8+2.8
Volt/V	220V-240V

**TEN-60**

Table type Electric Noodle Cooker

Packing size (mm)	730*740*550
Dimension(mm)	600*600*350+50
N/W(kg)	23
G/W(kg)	36
Power(w)	6
Pa	220V-240V
Power(w) Volt/V	



**TGB-404**

Table type Gas Lava stone grill

Packing size (mm)	740*490*490
Dimension(mm)	400*670*405+50
N/W(kg)	15
G/W(kg)	26
Power(kW)	5
Pa	LPG2800Pa

**TEF-405**

Table Type Electric Fryer

Packing size (mm)	740*490*590
Dimension(mm)	400*670*405+50
N/W(kg)	20
G/W(kg)	31
Power(w) Volt/V	3.5
Pa	220V-240V

**TEN-406**

Electric Noodle Cooker

Packing size (mm)	740*490*490
Dimension(mm)	400*670*405+50
N/W(kg)	17.6
G/W(kg)	28.6
Power(w) Volt/V	5.4
Pa	220V-240V



# Contact Grills

## Contact Grills



### TCG-813E

#### Electric Contact Grill

<b>Double</b>	
SSRPacking size (mm)	930*440*250
Dimension(mm)	820*395*190
	38
G/W(kg)	40
	2.2*2.2
Power(w)	220V-240V



TCG-813EB		TCG-813EC	
		4 C€	4 C€
<b>Electric Contact Grill Flat Double</b>		<b>Electric Contact Grill Double(top ribbed/bottom flat)<sup>m</sup></b>	
Packing size (mm)	930*440*250	Packing size (mm)	930*440*250
Dimension(mm)	820*395*190	Dimension(mm)	820*395*190
N/W(kg)	34	N/W(kg)	34
G/W(kg)	35	G/W(kg)	35
Power(w)	220V-240V	Power(w)	220V-240V
*SVoltsA	220V-240V	*SVoltsA	220V-240V

## Contact Grills



### TCG-813

Electric Contact Grill Double

Packing size (mm) 640\*480\*280  
 Dimension (mm) 565\*370\*190  
 27  
 NW(kg) 28  
 G/W(kg) 1.8+1.8  
 220V-240V  
 Power(w) Volts/v



TCG-811	TCG-811 B	TCG-811 C	A C C
Arc		A C C	
Electric Contact Grill Single	Electric Contact Grill Flat Single	Electric Contact Grill Single(top ribbed / bonom flat)	
Packing size (mm)	Packing size (mm)	Packing size (mm)	Packing size (mm)
410*440*250	410*440*250	410*440*250	410*440*250
Dimension(mm)	Dimension(mm)	Dimension(mm)	Dimension(mm)
370*305*190	370*305*190	370*305*190	370*305*190
NW(kg)	NW(kg)	NW(kg)	NW(kg)
13	13	13	13
G/W(kg)	G/W(kg)	G/W(kg)	G/W(kg)
1.4	1.4	1.4	1.4
Power(w)	Power(w)	Power(w)	Power(w)
1.8	1.8	1.8	1.8
Volts/v	Volts/v	Volts/v	Volts/v
220V-240V	220V-240V	220V-240V	220V-240V



### TCG-813B

Electric Contact Grill Flat Double

Packing size (mm) 640\*480\*280  
 Dimension (mm) 565\*370\*190  
 23.5  
 NW(kg) 25  
 G/W(kg) 1.8 + 1.8  
 220V-240V  
 Power(w) Volts/v

### TCG-813D

Electric Contact Grill Double(ribbed/flat)

Packing size (mm)	640*480*280
Dimension (mm)	565*370*190
NW(kg)	23.5
G/W(kg)	25
Power(w)	1.8+1.8
Volts/v	220V-240V

### TCG-813C

Electric Contact Grill Double (top ribbed / bottom flat)

Packing size (mm)	640*480*280
Dimension (mm)	565*370*190
NW(kg)	23.5
G/W(kg)	25
Power	1.8+1.8
Volts/v	220V-240V



TCG-811E	TCG-811EB	TCG-811 EC	L G
L	L C C		
Electric Contact Grill Single	Electric Contact Grill Flat Single	Electric Contact Grill Single (ribbed / bottom flat)	
Packing size (mm)	Packing size (mm)	Packing size (mm)	Packing size (mm)
530*440*250	530*440*250	530*440*250	530*440*250
Dimension(mm)	Dimension (mm)	Dimension(mm)	Dimension(mm)
325*370*190	325*370*190	325*370*190	325*370*190
NW(kg)	NW(kg)	NW(kg)	NW(kg)
17	17	17	17
G/W(kg)	G/W(kg)	G/W(kg)	G/W(kg)
1.8	1.8	1.8	1.8
Power(w)	Power(w)	Power(w)	Power(w)
2.2	2.2	2.2	2.2
Volts/v	Volts/v	Volts/v	Volts/v
220V-240V	220V-240V	220V-240V	220V-240V

# FRYER SERIES



## TEF-8L

Electric Fryer Single  
 470\*320  
 Packhg size (mm) \*380  
 Dimension(mm) 260\*415  
 N/W(kg) \*335  
 G/W 5  
 Power(W) 6

## TEF-8L-2

Electric Fryer Double  
 Packhg size (mm) 470\*600\*380 545\*415\*335  
 Dimension(mm) 9.5  
 N/W(kg) %KG/W(k) 10.5  
 Power(W) 3.25+3.25 220V-240V



TEF-11L  
 Electric Fryer Single

Packhg size (mm) 500\*400\*370  
 Dimension(mm) 325\*435\*335  
 N/W(kg) B.5  
 G/W 7.5  
 Power(W) 3.5  
 Voltage 220V-240V



TEF-11L-2  
 Electric Fryer Double

SWW Packhg size (mm) 740\*500\*370  
 Dimension(mm) 670\*435\*335  
 N/W(kg) 12  
 H GW(kg) 14  
 Power 3.5+3.5  
 Voltage 220V-240V



TEF-901 TEF-902

### Electric Fryer Single

Packhg size (mm) 640\*840\*490  
 Dimension(mm) 300\*595\*410  
 N/W 9  
 G/W(kg) 10  
 Power(kW) 2.8 /220V-240v

### Electric Fryer Double

Packhg size (mm)	640*650*490
Dimension(mm)	600*595*450
N/W	16
^ftG/W(kg)	24
Power(kW)	2.8+2.8
^SVdt/v	220V-240V



## TEF-903

Electric Fryer Single

Packhg size (mm)	710*380*490
Dimension(mm)	330*620*450
N/W	11
^ftG/W(kg)	12
Power(kW)	4.5
^SVdt/v	220V-240V

## TEF-904

Electric Fryer Double

Packhg size (mm)	710*670*490
Dimension(mm)	660*820*450
N/W	20
^ftG/W(kg)	26
Power(kW)	4.5
^SVdt/v	220V-240V



**TEF-131V**   
Electric Fryer Single

**TEF-132V**   
Electric Fryer Double

Packing size (mm)	570*310*390	Packing size (mm)	610*570*450
Dimension (mm)	290*520*360	Dimension (mm)	690*520*360
N/W(kg)	8	N/W(kg)	15
G/W(kg)	9	G/W(kg)	17
Power(kW)	3	Power(A/V)	5+5
Volt/V	220V-240V	Volt/V	220V-240V



Fryer

**TEF-101** 

**TEF-102** 

**TEF-30L** 

Electric Fryer Single		Electric Fryer Double		Electric Fryer Double	
Packing size (mm)	320*500*310	Packing size (mm)	610*500*310	Packing size (mm)	900*900*570
Dimension (mm)	290*460*285	Dimension (mm)	585*460*285	Dimension (mm)	800*800*570
N/W(kg)	5	N/W(kg)	9	N/W(kg)	40
G/W(kg)	6	G/W(kg)	10	G/W(kg)	55
Power(kW)	3	Power(kW)	6	Power(A/V)	18
Volt/V	220V-240V	Volt/V	220V-240V	Volt/V	380V-415V



**TEF-161V** 

**TEF-162V** 

Electric Fryer Single

Electric Fryer Double

Packing size (mm)	570*310*450	Packing size (mm)	610*570*450
Dimension (mm)	340*590*360	Dimension (mm)	690*590*360
N/W(kg)	10	N/W(kg)	16
G/W(kg)	11	G/W(kg)	19
Power(kW)	5	Power(A/V)	5+5
Volt/V	220V-240V	Volt/V	220V-240V



TEF-101V		TEF-102V	
Electric Fryer Single		Electric Fryer Double	
Packing size (mm)	570*310*340	Packing size (mm)	610*570
Dimension (mm)	290*520*310	Dimension (mm)	590*500
N/W(kg)	7.5	N/W(kg)	13.5
G/W(kg)	8.5	G/W(kg)	15.5
Power(kW)	2.5	Power(A/V)	5
Volt/V	220V-240V	Volt/V	220V-240V



# Fryer



TEF-4L		TEF-4L-2	
Electric Fryer Single		Electric Fryer Double	
Packing size (mm)	280*470*340	Packing size (mm)	510*470*340
Dimension(mm)	215*380*310	Dimension(mm)	400*380*310
N/W(kg)	5	N/W(kg)	10
G/W(kg)	5	G/W(kg)	11
Power(kW)	2	Power(kW)	2+2
Volt/V	220V-240V	Volt/V	220V-240V

## TEF-81

Electric Fryer Single		€
Packing size (mm)	480*300*320	
Dimension(mm)	285*440*305	
N/W(kg)	5	
G/W(kg)	6	
Power(kW)	2.5	
Volt/V	220V-240V	

## TEF-82

Electric Fryer Double	
Packing size (mm)	580*480*320
Dimension(mm)	565*440*305
N/W(kg)	10
G/W(kg)	2.5+2.5
Power(kW)	220V-240V



## TEF-84

Electric Fryer Single 2-Basket

Packing size (mm)	580*480*370
Dimension(mm)	540*440*355
N/W(kg)	10
G/W(kg)	11
Power(kW)	4+4
Volt/V	220V-240V

## TEF-83

Electric Fryer Single 2-Basket

Packing size (mm)	580*480*320
Dimension(mm)	565*440*305
N/W(kg)	8.5
G/W(kg)	9.5
Power(kW)	2.5+2.5
Volt/V	220V-240V

## TEF-89

Electric Fryer Double

Packing size (mm)	580*480*370
Dimension(mm)	565*440*355
N/W(kg)	10
G/W(kg)	11
Power(kW)	3.25+3.25
Volt/V	220V-240V

## TEF-88

Electric Fryer Single

Packing size (mm)	480*300*370
Dimension(mm)	285*440*355
N/W(kg)	6
G/W(kg)	7
Power(kW)	3.25
Volt/V	220V-240V

TEF-6L		TEF-6L-2	
Electric Fryer Single		Electric Fryer Double EH c €	
Packing size (mm)	470*320*330	Packing size (mm)	470*600*330
Dimension(mm)	260*415*285	Dimension (mm)	545*415*285
N/W(kg)	6	N/W(kg)	9.2
G/W(kg)	7	G/W(kg)	10.5
Power(kW)	2.5	Power(kW)	2.5+2.5
Volt/V	220V-240V	Volt/V	220V-240V



Fryer

	TGF-12L	TGF-12L-2	
4	Gas Fryer Single	Gas Fryer Double	
			S
Packing size (mm)	380*380*550	740*580*550	
	Dimension(mm)	350*500*515	700*500*515
	N/W(kg)	11	19
	G/W(kg)	12	20
	Power(kW)	3.25	10.5
	Pa	LPG2800Pa	LPG2800Pa

	TGF-781	TGF-782	
4	Gas Fryer Single	Gas Fryer Double	
			S
Packing size (mm)	500*320*600	800*500*600	
	Dimension(mm)	285*475*560	575*475*560
	N/W(kg)	9.5	18
	G/W(kg)	23	30
	Power(kW)	5.25	5.25
	Pa	LPG2800Pa	LPG2800Pa

TGF73		TGF^2	TGF^1
Gas Fryer Single(2-Basl	(et) H & s	Gas Fryer Double	Gas Fryer Single
Packing size (mm)	620*550*490	Packing size (mm)	620*550*490
Dimension(mm)	550*470*470	Dimension(mm)	550*470*470
N/W(kg)	11	N/W(kg)	11
G/W(kg)	13	G/W(kg)	13
Power(kW)	10.5	Power(kW)	10.5
Volt/V	LPG2800Pa	Volt/V	LPG2800Pa



TEF-12L



TEF-12L-2



Packing size (mm)	540*330*450
Dimension(mm)	290*470*410
N/W(kg)	3.25
G/W(kg)	220V-240V
Power(kW)	
Volt/V	

Packing size (mm)	620*540*450
Dimension(mm)	580*470*410
N/W(kg)	3.25+3.25
G/W(kg)	220V-240V
Power(kW)	
Volt/V	

TGF-83		TGF-82	TGF-81
Gas Fryer Single(2-Basket)	AS	Gas Fryer Double	Gas Fryer Single
Packing size (mm)	620*550*540	Packing size (mm)	620*550*540
Dimension(mm)	550*470*515	Dimension(mm)	580*470*515
N/W(kg)	17	N/W(kg)	17
G/W(kg)	18	G/W(kg)	18
Power(kW)	10.5	Power(kW)	10.5
Volt/V	LPG2800Pa	Volt/V	LPG2800Pa

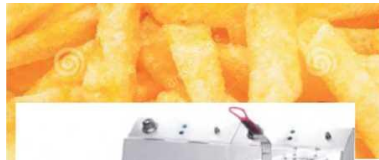


**FEF-26**



Floor Type Electric Fryer Single(2-Basket)

Packing size (mm)	920*500*1150
Dimension(mm)	420*815*920+130
N/W(kg)	41
G/W(kg)	56
Power(kW)	10
Volt/V	380V-415V



**FEF-26-2**



FloorType Electric Fryer Double(4-Basket)

Packing size (mm)	920*860*1150
Dimension(mm)	300*815*920+130
N/W(kg)	70
G/W(kg)	30
Power(kW)	20
Volt/V	380V-415V



**FEF-28L**



Floor Type Electric Fryer Single(2-Basket)

Packing size (mm)	92*52*126
Dimension(mm)	300*805*975+130
N/W(kg)	41
G/W(kg)	56
Power(kW)	10
Volt/V	380V-415V



**FEF-28L-2**

Floor Type Electric Fryer Single(4-Basket)

Packing size (mm)	92*90*126
Dimension(mm)	300*805*975+130
N/W(kg)	70
G/W(kg)	30
Power(kW)	20
Volt/V	380V-415V



**TGF-171**



17L 17L Gas Fryer Single

Packing size (mm)	720*430*850
Dimension(mm)	310*640*760
N/W(kg)	22
G/W(kg)	27
Power(kW)	6
Pa	LPG2800P



**TGF-172**



17Laa  
17L Gas Fryer Double^

Packing size (mm)	720*430*850
Dimension(mm)	310*640*760
N/W(kg)	44
G/W(kg)	52
Power(kW)	12
Pa	LPG2800P



**FGF-3B**



3-tubes Gas Fryer

Packing size (mm)	850*500*1230
Dimension(mm)	400*700*950+130
N/W(kg)	51
G/W(kg)	56
Power(kW)	18
Pa	LPG2800Pa



**FGF-4B**



4-tubes Gas Fryer

Packing size (mm)	850*600*1230
Dimension(mm)	500*700*950+130
N/W(kg)	55
G/W(kg)	55
Power(kW)	24
Pa	LPG2800Pa



# Fryer



**TEF-171V**  
Electric Fryer SingBu

Packing size (mm) 640\*330\*430  
305\*530\*410  
Dimension(mm) 8  
9  
N/W(kg) G/W(kg) 3  
Power(kW) 220V-240V  
Volt/V



**TEF-172V**

Electric Fryer Doub

Packing size (mm) 640\*640\*430  
620\*530\*410  
Dimension(mm) 16  
24  
N/W(kg) 3+3  
G/W(kg) 220V-240V  
Power(kW)  
Volt/V



**FGF-9C1**

Gas Fryer(2-Basket) With Cabinet

Packing size (mm) 930\*500\*1080  
420\*900\*820+130  
Dimension(mm) 60  
75  
N/W(kg) 27  
G/W(kg) 380V-415V  
Power(kW)  
Pa



**FEF-9C1**

Electric Fryer(2-Basket) With Cabinet

Packing size (mm) 930\*500\*1080  
420\*900\*820+130  
Dimension(mm) 55  
N/W(kg) 70  
G/W(kg) 12  
Power(kW) 380V-415V  
Volts/v



**FEF-101**



Computerized 1-Tank2-Basket Electric Fryer

Packing size (mm) 480\*870\*1100  
400\*790\*1060  
Dimension(mm) 41  
N/W(kg) 56  
G/W(kg) 18  
Power(kW) 380V-415V  
Volt/V



**TEF-84**

Electric Fryer Single

Packing size (mm)	350*600*1010
Dimension(mm)	25
N/W(kg)	35
G/W(kg)	3
Power(kW)	220V-240V
Volt/V	



**TGF-74**



Gas Fryer Single

Packing size (mm) 660\*600\*1010  
590\*520\*980  
Dimension(mm) 26  
36  
N/W(kg) 6  
G/W(kg) LPG2800Pa  
Power(kW)  
Volt/V

**FEF-102**



Computerized 2-Tank2-Basket Electric Fryer

Packing size (mm)	900*870*1100
Dimension(mm)	300*790*1060
N/W(kg)	75
G/W(kg)	30
Power(kW)	1.8+1.8
Volt/V	380V-415V

**TEF-85**



Electric Fryer Double

Packing size (mm) 660\*600\*1010  
590\*520\*980  
Dimension(mm) 35  
N/W(kg) 10.5  
G/W(kg) 220V-240V  
Power(kW)  
Volt/V

**TGF-75**



Gas Fryer Double

Packing size (mm) 660\*600\*1010  
590\*520\*980  
Dimension(mm) 26  
36  
N/W(kg) 12  
G/W(kg) LPG2800Pa  
Power(kW)  
Volt/V



Griddle



TGG-488	1	TGG-718		TGG-720	
	Gas Griddle		Gas Griddle		Gas Griddle
Packing size(mm)	630*680*620	Packing size(mm)	650*640*620	Packing size (mm)	800*680*610
Dimension (mm)	430*610*470	Dimension(mm)	550*514*540	Dimension(mm)	730*565*540
NW(kg)	41	NW(kg)	23	NW(kg)	28
GW(kg)	49	GW(kg)	29	GW(kg)	35
Power(IA/V)	8	Power(Ia/V)	6	Power(I/V)	11.5
	LPG2800Pa	Pa	LPG2800Pa	Pa	LPG2800Pa



TEG-488	£	TGG-722	g.L	TGG-721	
	Electric Griddle		Gas Griddle(12 Grooved)		Gas Griddle(Grooved)
Packing size(mm)	450*600*260	Packing size(mm)	800*680*610	Packing size(mm)	650*640*620
Dimension (mm)	410*535*235	Dimension(mm)	730*565*540	Dimension(mm)	550*515*540
NW(kg)	16	NW(kg)	28	NW(kg)	23
GW(kg)	18	GW(kg)	35	GW(kg)	29
Power(IAA)	3	Power(kW)	11.5	Power(kW)	6
Volt/V	220V-240V	Pa	LPG2800P3	Pa	LPG2800Pa



**GH-280F**

Packing size(mm)	490*580*340
Dimension(mm)	280*500*260
N/W(kg)	15
G/W(kg)	26
Power(IA/V)	3
Volt/V	220V-240V

Electric Griddle



<b>TEG-81 OF</b>		<b>TEG-810G</b>	
Electric Flat Griddle		Electric Griddle (Grooved)	
Packing size(mm)	540*330*230	Packing size(mm)	540*330*230
Dimension (mm)	360*450*205	Dimension (mm)	360*450*205
N/W(kg)	12	N/W(kg)	12
G/W(kg)	23	G/W(kg)	23
Power(kA)	2	Power(WV)	2
Volt/V	220V-240V	Volt/V	220V-240V

**GH-280G**

Electric Griddle (Grooved)

Packing size (mm)	490*580*340
Dimension(mm)	280*500*260
N/W(kg)	15
G/W(kg)	26
Power(kW)	3
Volt/V	220V-240V



<b>TEG-920</b>	<b>TEG-922</b>	<b>ME</b>	<b>GH-60RL</b>
Electric Flat Griddle	Up Electric Grill (1/2 Grooved)		Electric Grill (1/2 Grooved)
Packing size (mm)	860*710*490	Packing size (mm)	860*710*490
Dimension(mm)	760*600*390	Dimension (mm)	760*600*390
N/W(kg)	50	N/W(kg)	45
G/W(kg)	58	G/W(kg)	53
Power(kW)	6	Power(dA)	6
Volt/V	220V-240V	Volt/V	220V-240V
			Electric Grill (1/2 Grooved)
			Packing size (mm)
			840*540*290
			Dimension (mm)
			600*500*275
			N/W(kg)
			35
			G/W(kg)
			43
			Power(kW)
			4.5
			Volt/V
			220V-240V

**TEG-818D**

Electric Griddle	
Packing size (mm)	610*520*270
Dimension(mm)	550*480*230
N/W(kg)	21
G/W(kg)	23
Power(W/V)	3
Volt/V	220V-240V



<b>TEG-821D</b>	<b>TEG-820D</b>	<b>TEG-822D</b>	
Electric Grill (Grooved)	Electric Griddle	Electric Grill (1/3 Grooved)	
Packing size (mm)	610*520*270	Packing size (mm)	790*550*270
Dimension(mm)	550*480*230	Dimension(mm)	730*520*230
N/W(kg)	21	N/W(kg)	27
G/W(kg)	23	G/W(kg)	29
Power(W/V)	3	Power(W/V)	4.4
Volt/V	220V-240V	Volt/V	220V-240V
			Electric Grill (1/3 Grooved)
			Packing size (mm)
			790*550*270
			Dimension(mm)
			730*520*230
			N/W(kg)
			28
			G/W(kg)
			29
			Power(IA/V)
			4.4
			Volt/V
			220V-240V



<b>TEG-600</b>	<b>TEG-750</b>	<b>TEG-600B</b>	<b>TEG-750B</b>
Electric griddle flat	Electric griddle flat	Electric Griddle (3 grooved)	Electric Griddle (3 grooved)
Packing size(mm)	640*540*290	Packing size (mm)	640*540*290
Dimension (mm)	600*470*235	Dimension(mm)	600*470*235
N/W(kg)	23	N/W(kg)	23
G/W(kg)	25	G/W(kg)	25
Power(WA)	5	Power(kW)	5
Volt/V	220V-240V	Volt/V	220V-240V
			Electric Griddle (3 grooved)
			Packing size (mm)
			640*540*290
			Dimension (mm)
			600*470*235
			N/W(kg)
			27
			G/W(kg)
			28
			Power(kW)
			5
			Volt/V
			220V-240V



**TEG-830**

Electric Griddle

Packing size (mm) 570\*540\*260  
 Dimension(mm) 18  
 N/W(kg) 23  
 G/W(kg) 3  
 Power(kW) Volt/V 220V-240V

**TEG-831**

WVP Electric Grill(1/2 Grooved)

Packing size (mm) 570\*540\*260  
 Dimension(mm) 520\*450\*225  
 N/W(kg) 18  
 G/W(kg) 23  
 Power(kW) Volt/V 220V-240V



Griddle

**TEG-818H**

Electric Grill(1/2 Grooved)

Packing size (mm) 610\*470\*270  
 Dimension(mm) 550\*425\*225  
 N/W(kg) 17  
 G/W(kg) 18.5  
 Power(kW) Volt/V 3  
 220V-240V



TEG-820	Electric Griddle	TEG821	Electric Grill(Grooved)	TEG-822	1/3 Electric Grill(1/3 Grooved)
Packing size (mm)	780*530*270	Packing size (mm)	610*470*270	Packing size (mm)	780*530*270
Dimension(mm)	730*475*225	Dimension(mm)	550*425*225	Dimension(mm)	730*475*225
N/W(kg)	25	N/W(kg)	18.5	N/W(kg)	25
G/W(kg)	27	G/W(kg)	23	G/W(kg)	27
Power(kW)	4.4	Power(kW)	3	Power(kW)	4.4
Volt/V	220V-240V	Volt/V	220V-240V	Volt/V	220V-240V



TEG-41 OF	Electric Griddle	TEG-410F/G	Electric Grill(1/2 Grooved)	TEG410G	Electric Griddle (Grooved)
Packing size(mm)	550*570*340	Packing size(mm)	550*570*340	Packing size (mm)	550*570*340
Dimension(mm)	460*440*245	Dimension(mm)	460*440*245	Dimension(mm)	460*440*245
N/W(kg)	20	N/W(kg)	20	N/W(kg)	20
G/W(kg)	23	G/W(kg)	23	G/W(kg)	23
Power(kW)	2.5	Power(kW)	2.5	Power(kW)	2.5
Volt/V	220V-240V	Volt/V	220V-240V	Volt/V	220V-240V



TEG-818	Electric Griddle	TEG-818X	Electric Griddle	TEG-818XX	Electric Griddle
Packing size (mm)	610*470*270	Packing size (mm)	590*440*270	Packing size (mm)	450*440*270
Dimension(mm)	550*425*225	Dimension(mm)	550*370*225	Dimension(mm)	400*370*225
N/W(kg)	17	N/W(kg)	15.5	N/W(kg)	13
G/W(kg)	18.5	G/W(kg)	17	G/W(kg)	15
Power(kW)	3	Power(kW)	3	Power(kW)	2.5
Volt/V	220V-240V	Volt/V	220V-240V	Volt/V	220V-240V



GH-610F	Electric Flat Griddle	TEG-61 OF/G	Electric Grill(1/2 Grooved)	TEG-610G	Electric Griddle (Grooved)
Packing size (mm)	730*570*340	Packing size (mm)	730*570*340	Packing size (mm)	730*570*340
Dimension(mm)	630*440*240	Dimension(mm)	630*440*240	Dimension(mm)	630*440*240
N/W(kg)	28	N/W(kg)	28	N/W(kg)	28
G/W(kg)	30	G/W(kg)	30	G/W(kg)	30
Power(kW)	3.4	Power(kW)	3.4	Power(kW)	3.4
Volt/V	220V-240V	Volt/V	220V-240V	Volt/V	220V-240V

# Pizza Oven



**TEG-24**

**Electric griddle flat**

Packing size (mm)	700*730*450
Dimension (mm)	615*655*370
N/W(kg)	40
G/W(kg)	46
Power(kW)	8
Volt/V	380V-415V



**TGG-24**

Packing size(mm)	700*730*450
Dimension (mm)	615*655*370
N/W(kg)	40
G/W(kg)	46
Power(kW)	8
Pa	LPG2800P



**TGG-36**



**TEG-36**

Electric griddle flat		Gas griddle flat	
Packing size(mm)	900*730*450	Packing size(mm)	900*730*450
Dimension (mm)	815*615*370	Dimension (mm)	815*615*370
N/W(kg)	80	N/W(kg)	80
G/W(kg)	88	G/W(kg)	88
Power(kW)	12	Power(kW)	12
Volt/V	380V-415V	Pa	LPG2800Pa



**TEG-48**

Electric griddle flat	
Packing size(mm)	1300*730*450
Dimension(mm)	1215*615*370
N/W(kg)	102
G/W(kg)	112
Power(kW)	18
Volt/V	380V-415V



**TGG: 48**

Gas griddle flat	
Packing size(mm)	1300*730*450
Dimension(mm)	1215*615*370
N/W(kg)	102
G/W(kg)	112
Power(kW)	18
Pa	LPG2800Pa



**TEP-1A**



Computerized Electric Pizza Oven Single	
Packing size (mm)	760*780*400
Dimension(mm)	685*660*330
N/W(kg)	38
G/W(kg)	45
Power(kW)	2.5
Volt/V	220V-240V



**TEP-1AMS**



**Computerized Electric Pizza Oven Single**

Packing size (mm)	760*780*400
Dimension(mm)	685*660*330
N/W(kg)	38
G/W(kg)	45
Power(kW)	2.5
Volt/V	220V-240V



**TEP-2A**



Computerized Electric Pizza Oven Double	
Packing size (mm)	760*730*680
Dimension(mm)	685*660*610
N/W(kg)	62
G/W(kg)	72
Power(kW)	5
Volt/V	220V-240V



**TEP-2AMS**



Computerized Electric Pizza Oven Double	
Packing size (mm)	760*730*680
Dimension (mm)	685*660*610
N/W(kg)	62
G/W(kg)	72
Power(kW)	5
Volt/V	220V-240V

Pizza Oven



**TEP-4-1A**

Electric Pizza Oven Single



Packing size (mm) 940\*940\*600  
890\*820\*450  
Dimension(mm) 58  
76  
N/W(kg) 4.2  
G/W(kg) 220V-240V  
Power(kW) Volt/V

**TEP-6-1A**

Electric Pizza Oven Single



Packing size (mm) 1250\*940\*600  
1155\*820\*450  
Dimension(mm) 78  
98  
N/W(kg) 7.2  
G/W(kg) 220V-240V  
Power(kW) Volt/V



**TEP-4-2A**

Electric Pizza Oven Double

Packing size (mm)	980*940*930
Dimension(mm)	890*820*770
N/W(kg)	122
G/W(kg)	4.2+4.2
Power(kW) Volt/V	380V-415V

**TEP-6-2A**

Electric Pizza Oven Double

包装尺寸 Packing size (mm) 产	1250*940*930
贴尺寸 Dimension(mm) 净重	1155*820*770
N/W(kg) 毛重 G/W(kg) 功率	147
Power(kW) 电压 Volt/V	7.2+7.2 380V-415V



Pizza Oven



**TEP-4S**

Electric Pizza Oven Single (S.Steel)

Packing size (mm) 940\*940\*600  
890\*820\*450  
Dimension(mm) 60  
78  
N/W(kg) 4.2  
G/W(kg) 220V-240V  
Power(kW) Volt/V

**TEP-6S**

Electric Pizza Oven Single (S.Steel)



Packing size (mm) 1250\*940\*600  
1155\*820\*450  
Dimension(mm) 80  
90  
N/W(kg) 7.2  
G/W(kg) 380V-415V  
Power(kW) Volt/V



**TEP-4S-2**

Electric Pizza Oven Double(S.Steel)

Packing size (mm) 980\*940\*930  
890\*820\*770  
Dimension(mm) 110  
130  
N/W(kg) G/W(kg) 4.2+4.2  
Power(kW) Volt/V 380V-415V

**TEP-6S-2**

Electric Pizza Oven Double (S.Steel)

Packing size (mm) 1250\*940\*930  
1155\*820\*770  
Dimension(mm) 130  
155  
N/W(kg) 7.2+7.2  
G/W(kg) 380V-415V  
Power(kW) Volt/V



**TEP-1S**

Electric Pizza Oven Single(S.Steel)



Packing size (mm) 640\*590\*340  
560\*570\*260  
Dimension(mm) 17  
18  
N/W(kg) 2  
G/W(kg) 220V-240V  
Power(kW) Volt/V



**TEP-2S**

Electric Pizza Oven Double(S.Steel)



Packing size (mm) 640\*640\*490  
580\*580\*440  
Dimension(mm) 25  
27.5  
N/W(kg) 3  
G/W(kg) 220V-240V  
Power(kW) Volt/V



**TEP-1P**

Electric Pizza Oven Single(Painting)



Packing size (mm) 710\*680\*370  
560\*570\*260  
Dimension(mm) 17  
18  
N/W(kg) 2  
G/W(kg) 220V-240V  
Power(kW) Volt/V

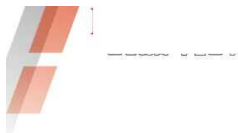


**TEP-2P**

Electric Pizza Oven Double(Painting)



Packing size (mm) 620\*620\*430  
580\*580\*440  
Dimension(mm) 25  
27.5  
N/W(kg) 3  
G/W(kg) 220V-240V  
Power(kW) Volt/V



## Oven



**YXD-1A**



**Electric convection oven**

Packing size (mm)	730*720*640
Dimension(mm)	600*560*560
	34
	44
NW(kg)	2.52
G/W(kg)	220V-240V
Power(kW) Volt/V	

**YXD-4A**



**Electric convection oven With Steam**

Packing size (mm)	730*720*640
Dimension(mm)	600*560*560
	35
	45
NW(kg)	2.52+2
G/W(kg)	220V-240V
Power(kW) Volt/V	

**YXD-4A-B**



**Electric Convection Oven With Steam**

Packing size (mm)	770*740*560
Dimension(mm)	690*(570+65)*500
	35
	45
NW(kg)	2.52+2
G/W(kg)	220V-240V
Power(kW) Volt/V	



## Oven



**YXD-B/C**

**Electric oven**

Packing size (mm)	730*720*640
Dimension(mm)	600*560*560
	34
	44
NW(kg)	2+2
G/W(kg)	220V-240V
Power(kW) Volt/V	

**YXD-B**

**Electric convection oven**

Packing size (mm)	730*720*640
Dimension(mm)	600*560*560
	35
	45
NW(kg) G/W(kg)	2.52
Power(kW) Volt/V	220V-240V

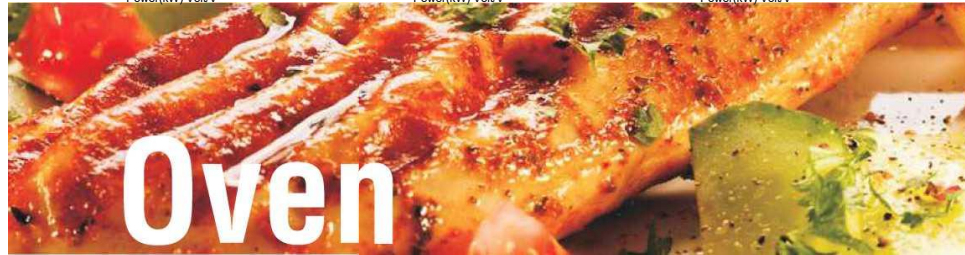


**YXD-8BG**



**YXD-10B YXD-10BG**

	Electric Baking Oven	Gas Baking Oven		Electric Baking Oven	Gas Baking Oven
Packing size (mm)	800*700*530	800*700*530	Packing size (mm)	1000*700*530	1000*700*530
Dimension(mm)	750*610*450	750*610*450	Dimension(mm)	900*630*450	900*630*450
NW(kg)	28	38	NW(kg)	44	54
G/W(kg)	35	45	G/W(kg)	55	64
Power(kW)	3.2	5	Power(kW)	6.2	7
Volt/V	240V	LPG2800Pa/220-240V	Volt/V	220V-240V	LPG2800Pa/220-240V



**YXD-4A-C**

**YXD-6A**



Electric computer system convection oven		Electric convection oven With Steam		Electric convection oven With Steam	
Packing size (mm)	760*750*600	Packing size (mm)	880*820*680	Packing size (mm)	910*860*660
Dimension(mm)	675*640*500	Dimension(mm)	825*680*90*670	Dimension(mm)	840*680*50*580
NW(kg)	38	NW(kg)	45	NW(kg)	58
G/W(kg)	45	G/W(kg)	51	G/W(kg)	71
Power(kW)	2.52+2	Power(kW)	3.2+2.5	Power(kW)	3.2+2.5
Volt/V	220V-240V	Volt/V	220V-240V	Volt/V	220V-240V

**YXD-10D**

**Electric Computer system Baking Oven**

Packing size (mm)	1000*700*530
Dimension(mm)	900*630*450
	44
	55
Power(kW)	6.2
Volt/V	220V-240V



# FOOD Warmer



DH-11-21

DH-22-21

Food warmer cart(One Door)	ice	( A C C ) Food warmer cart (Tow Door)	
Packing size(mm)	880*1060*1855	Packing size(mm)	1640*1060*1855
Dimension(mm)	780*960*1755	Dimension (mm)	1540*960*1755
NW(kg)	130	NW(kg)	250
GW(kg)	160	GW(kg)	300
Power(W)	2.6	Power(A·V)	3.6
Volts(AZ)	220V-240V	Vdts/V	220V-240V



## Food Warmer



RFW-20H	
Food Display Warmer	
Packing size(mm)	810*520*760
Dimension (mm)	705*405*660
NW(kg)	40
GW(kg)	52
Power(kW)	0.48 220V-240V



DH-1200R

DH-900R

Electric Hokah\* drculathm Food Display Warmer

Packing size(mm)	50	950*620*6
Dimension (mm)	05	890*525*6
NW(kg)		37
GW(kg)		47
Power(k·W)		1.2
VdV		220V-240V

Electric Hot-air Circulation Food Display Warmer

Packing size(mm)	50	1260*620*6
Dimension(mm)	05	1260*525*6
NW(kg)		45
GW(kg)		58
Power(V)		1.5
VdV		220V-240V



DH-900A

Food Display Warmer

Packing size(mm)	50	950*620*650
Dimension(mm)		890*525*605
NW(kg)		37
GW(kg)		47
Power(WV)		0.8
Vdt/V		220V-240V

DH-1200A

Food Display warmer

Packing size(mm)	50	1260*620*650
Dimension(mm)	5	1260*525*60
NW(kg)		45
GW(kg)		58
Power(kW)		1.2
Vdt/V		220V-240V



<b>TFW-2P</b>		<b>TFW-2PR</b>	
Curved Glass Food Display Warmer		Curved Glass Hotair Circulation	
Packing size(mm)	740*580*690	rooa uispiay warmer	
Dimension(mm)	660*475*620	Packng size (mm)	740*580*690
N/W(kg)	25	Dimension (mm)	660*475*620
G/W(kg)	32	N/A/V	25
<b>TFW-3P</b>		<b>TFW-3PR</b>	
Curved Glass Food Display Warmer		Curved Glass Hotair Circulation Food Display Warmer	
Packing size(mm)	1070*600*700	Packing size(mm)	1070*600*700
Dimension(mm)	990*475*620	Dimension(mm)	990*475*620
N/W(kg)	35	N/W(kg)	35
G/W(kg)	45	G/W(kg)	56
Power(kW)	1.3	Power(kW)	1.8
Volt/V	220V-240V	Volt/V	220V-240V

**TFW-2PRS**  
Curved Glass Hotair Circulation Food Display Warmer(S.S)

Packing size(mm)	740*580*690
N/W(kg)	25
G/W(kg)	35
Power(kW)	1.2
Volt/V	220V-240V

**TI**

Food Display Warmer	
Packing size(mm)	760*550*720
Dimension(mm)	660*440*630
N/W(kg)	31
G/W(kg)	40
Power(kW)	1.84
Volt/V	220V-240V

**TFW-3PRS**  
Curved Glass Hotair Circulation Food Display Warmer(S.S)

Packing size(mm)	1070*600*700
Dimension(mm)	990*475*620
N/W(kg)	45
G/W(kg)	56
Power(kW)	1.8
Volt/V	220V-240V

**TFW-900R (602)**

Food Display Warmer	
Packing size(mm)	1010*570*720
Dimension(mm)	900*440*630
N/W(kg)	40
G/W(kg)	51
Power(kW)	1.85
Volt/V	220V-240V

**TFW-4P**

Curved Glass Food Display Warmer

Packing size(mm)	1400*600*700
Dimension (mm)	1200*475*620
N/W(kg)	50
G/W(kg)	70
Power(kW)	2.4
Volt/V	220V-240V

**TFW-4PR**

Curved Glass Hotair Circulation Food Display Warmer

Packing size(mm)	1400*600*700
Dimension(mm)	1200*475*620
N/W(kg)	60
G/W(kg)	70
Power(kW)	2.4
Volt/V	220V-240V

**TFW-4PRS**

Curved Glass Hotair Circulation Food Display Warmer(S.S)

Packing size(mm)	1400*600*700
Dimension(mm)	1200*475*620
N/W(kg)	60
G/W(kg)	70
Power(kW)	2.4
Volt/V	220V-240V

**TFW-1200R (603)**

Food Display Warmer		CC
Packing size(mm)	1310*570*720	
Dimension(mm)	1200*440*630	
N/W(kg)	47	
G/W(kg)	59	
Power(kW)	2.2	
Volt/V	220V-240V	



**TFW.1P3** €  
Curved Glass Food Display Warmer

Packing size(mm)	540*460*590
Dimension(mm)	350*430*500
N/W(kg)	18
G/W(kg)	23
Power(kW)	0.75
Volt/V	220V-240V



**TFW-1P5**

**Curved Glass Food Display Warmer**

Packing size(mm)	540*460*800
Dimension(mm)	350*430*700
N/W(kg)	21.5
G/W(kg)	33
Power(kW)	0.9
Volt/V	220V-240V

**TFW-6P**

**Warming Display Showcase**

Packing size(mm)	1630*860*950
Dimension(mm)	1520*760*865
N/W(kg)	190
G/W(kg)	135
Power(kW)	3.5
Volt/V	220V-240V



**TFW-DT** ELE CE

Food Display Warmer

Packing size (mm)	530*430*360
Dimension(mm)	430*330*260
	8.5
N/W(kg)	12 (A)
G/W(kg)	0.5
Power(kW)-Volt/V	220V-240V



**DH-391** ELE CE

Display warmer cabinet

Packing size (mm)	600*530*380
Dimension(mm)	560*390*365
	12
N/W(kg)	18
G/W(kg)	0.85
Power(kW)	220V-240V
Volt/V	
Power(kW) Volt/V	

<b>TFW-2*2</b>		<b>TFW-2*3</b>	
		<b>Food Display Warmer</b>	
		<b>K CC</b>	
<b>Food Display Warmer</b>			
Packing size(mm)	740*580*690	Packing size(mm)	1320*740*830
Dimension(mm)	650*475*620	Dimension(mm)	1100*630*735
N/W(kg)	25	N/W(kg)	45
G/W(kg)	35	G/W(kg)	37
Power(kW)	1.2	Power(kW)	1.4
Volt/V	220V-240V	Volt/V	220V-240V



**DH-02** ELE CE  
Hot counter(2-Drawer)

Packing size(mm)	770*640*300
Dimension(mm)	750*580*385
N/W(kg)	18
G/W(kg)	26
Power(kW)	1
Volt/V	220V-240V

Packing size(mm)	770*640*550
Dimension(mm)	750*580*590
N/W(kg) G/W(kg)	29
Power(kW)	39
Volt/V	2
	220V-240V

**DWL.02** C €  
Double drawer bun warmer

Packing size(mm)	10	690*660*5
Dimension(mm)	30	630*630*5
N/W(kg)		30
G/W(kg)		40
Power(kW)		1.5
Volt/V		220V-240V

<b>D1b395</b>		<b>D1b805</b>		<b>TFW-13</b>	
<b>Display warmer cabinet</b>		<b>Food Display Warmer</b>		<b>Electric pizza warmer</b>	
Packing size (mm)	600*530*520	Packing size(mm)	960*480*690	Packing size(mm)	600*550*87
Dimension(mm)	500*400*420	Dimension(mm)	865*360*620	Dimension(mm)	500*450*77
N/W(kg)	12	N/W(kg)	36	N/W(kg)	30
G/W(kg)	18	G/W(kg)	48	G/W(kg)	40
Power(kW)	0.85	Power(kW)	1.5	Power(kW)	0.85
Volt/V	220V-240V	Volt/V	220V-240V	Volt/V	220V-240V
<b>DH-393</b>		<b>DH-580</b>		<b>TFMM4</b>	
<b>Display warmer cabinet</b>		<b>Food Display Warmer</b>		<b>Electric pizza warmer</b>	
Packing size (mm)	615*495*420	Packing size(mm)	740*460*610	Packing size(mm)	600*550*87
Dimension(mm)	500*400*285	Dimension(mm)	630*360*530	Dimension(mm)	500*450*77
N/W(kg)	9	N/W(kg)	18	N/W(kg)	40
G/W(kg)	15	G/W(kg)	28	G/W(kg)	50
Power(kW)	0.5	Power(kW)	1	Power(kW)	0.85
Volt/V	220V-240V	Volt/V	220V-240V	Volt/V	220V-240V

## Salamander



### TGS-14

Gas Salamander 8 M

Packing size (mm)	730*630*720
Dimension (mm)	620*440*620
N/W(kg)	32
G/W(kg)	42
Power(kW)	7



### TGS-16

Gas Salamander

Packing size (mm)	990*630*720
Dimension (mm)	880*440*620
N/W(kg)	63
G/W(kg)	73
Power(kW)	10.3
Pa	LPG2800Pa



### TGS-18

Gas Salamander \ GAS

Packing size (mm)	1200*630*720
Dimension (mm)	1100*440*620
N/W(kg)	72
G/W(kg)	85
Power(kW)	13.6
Pa	LPG2800Pa



### TGS-745

Gas Salamander

Packing size (mm)	900	980*530*720
Dimension (mm)	800	880*440*620
N/W(kg)	30	
G/W(kg)	42	
Power(kW)	13	
Pa	LPG2800Pa	



### TB2

Gas Salamander

Packing size (mm)	400	710*310
Dimension (mm)	330	680*290
N/W(kg)	9	
G/W(kg)	11	
Power(kW)	9	
Pa	LPG2800Pa	



### TGS-743

Gas Salamander

Packing size (mm)	750	560*540
Dimension (mm)	650	400*430
N/W(kg)	19	
G/W(kg)	28	
Power(kW)	7	
Pa	LPG2800Pa	

## Salamander



### TES-936

Electric Salamander

Packing size (mm)	660*350*310	Packing size (mm)	600*420*390
Dimension (mm)	615*305*280	Dimension (mm)	580*375*380
N/W(kg)	10.5	N/W(kg)	13.5
G/W(kg)	11.5	G/W(kg)	15
Power(kW)	2	Power(kW)	2.2
Volt/V	220V-240V	Volt/V	220V-240V



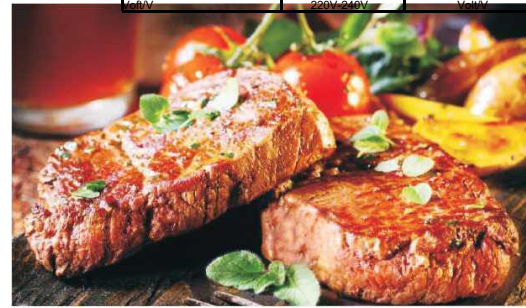
### TES-938

Electric Salamander



### TES-937

Packing size (mm)	500	830*480
Dimension (mm)	490	790*455
N/W(kg)	22	
G/W(kg)	24	
Power(kW)	4	
Volt/V	240V	220V-240V



### TES-800K

Electric Salamander

Packing size (mm)	50	900*550*650
Dimension (mm)	25	800*515*550
N/W(kg)	51	
G/W(kg)	53	
Power(kW)	5.6	
Volt/V	220V-240V	



### TES-450K

Electric Salamander

Packing size (mm)	550*550*650
Dimension (mm)	455*515*525
N/W(kg)	35
G/W(kg)	37
Power(kW)	2.8
Volt/V	220V-240V



### TES-600K \*

Electric Salamander

Packing size (mm)	700*550*650
Dimension (mm)	600*515*525
N/W(kg)	48
G/W(kg)	48
Power(kW)	4
Volt/V	220V-240V



## Electric Chicken rotisseries



**YXD-266**

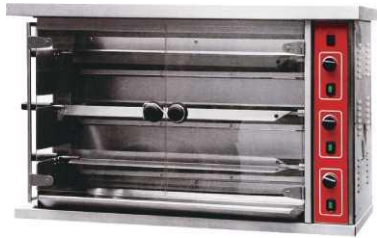
**YXD-268**

Electric Chicken rotisseries

Electric Chicken rotisseries

Packing size (mm)	880*820*680
Dimension(mm)	925*680*90*670
N/W(kg)	67
G/W(kg)	80
Power(W/V)	6.2+2.5
VolV	220V-240V

Packing size(mm)	1210*830*1000
Dimension	1010*630*800
N.W(KG)	100
G.W(KG)	84
Power(KG)	6.2+2.5
Volt/v	220V-240V



**GP-3T**

**GP-6T**

Gas rotisseries/thicken roaster(3\*3)



Packing size(mm)	1280*690*1030
Dimension(mm)	1180*490*830
NW(kg)	110
G/W(kg)	135
Power(kW)	6.2
Pa/V	LPG2800Pa/220V-240V

Gas rotisseries/thicken roaster(6\*6)



Packing size(mm)	1380*690*1580
Dimension(mm)	1180*490*830
N/W(kg)	110
G/W(kg)	140
Power(kW)	12.3
Pa/V	LPG2800Pa/220V-240V



**YXD-206**



Electric rotisserie/chicken roaster

**YXD-306**



Gas rotisserie/chicken roaster

Packing size (mm)	770*720*1610
Dimension(mm)	670*550*1515
N/W(kg)	90
G/W(kg)	105
Power(kW)	6.7
VolV	380V-415V



Packing size(mm)	770*720*1610
Dimension (mm)	670*550*1515
N/W(kg)	90
G/W(kg)	105
Power(kW)	6.7
Pa/V	LPG2800Pa/380V-415V



YXD-E6		YXD-E8		YXD-E12	
Electric rotisserie/chicken roaster(2*3)		Electric rotisseries/chicken roaster(2*4)		Electric rotisseries/chicken roaster(3*4)	
Packing size(mm)	300*760*730	Packing size (mm)	1080*630*730	Packing size(mm)	1080*630*910
Dimension(mm)	700*560*530	Dimension(mm)	880*430*530	Dimension(mm)	880*430*710
N/W(kg)	30	N/W(kg)	100	N/W(kg)	120
G/W(kg)	35	G/W(kg)	120	G/W(kg)	145
Power(kW)	5	Power(kW)	7	Power(kW)	9
VolV	LPG2800Pa	VolV	380V-415V	VolV	380V-415V

### Waffle Machines



TWB-1		TCB-1		TWB-2	
1-Plate Waffle Baker		1-Plate Cone Baker		2-Plate Waffle Baker	
Packing size (mm)	310*410*290	Packing size (mm)	310*410*290	Packing size (mm)	310*410*290
Dimension(mm)	250*325*260	Dimension(mm)	250*325*260	Dimension(mm)	300*325*260
N/W(kg)	5	N/W(kg)	5	N/W(kg)	11.5
G/W(kg)	5	G/W(kg)	5	G/W(kg)	12.5
Power(kW)	1.2	Power(kW)	1.2	Power(kW)	2.4
Volt/V	220V-240V	Volt/V	220V-240V	Volt/V	220V-240V



TWB^IX		TWB^X		TCB-2	
1-Plate Waffle Baker		2-Plate Waffle Baker		2-Plate Cone Baker	
Packing size (mm)	310*410*290	Packing size (mm)	350*410*290	Packing size (mm)	350*410*290
Dimension(mm)	250*325*260	Dimension(mm)	300*325*260	Dimension(mm)	300*325*260
N/W(kg)	5	N/W(kg)	11.5	N/W(kg)	11.5
G/W(kg)	5	G/W(kg)	12.5	G/W(kg)	12.5
Power(kW)	1.2	Power(kW)	2.4	Power(kW)	2.4
Volt/V	220V-240V	Volt/V	220V-240V	Volt/V	220V-240V



### Waffle Machines

**TWB-1A**  
1-Plate Waffle Baker

Packing size (mm)	510*340*380
Dimension(mm)	250*420*310
N/W(kg)	10
G/W(kg)	11
Power(kW)	1.2
Power(kW) Volt/V	220V-240V

**TWB-4**  
QQ Egg Cares Machine

Packing size (mm)	265*300*190*270
Dimension(mm)	5.8
N/W(kg) G/W(kg)	6.4
Power(kW) Volt/V	1.4
Power(kW) Volt/V	220V-240V

**WWB-2**  
2-Plate Waffle Baker

Packing size (mm)	155*39*27
Dimension(mm)	510*305*225
N/W(kg)	11
G/W(kg)	12
Power(kW) Volt/V	2.08
Power(kW) Volt/V	220V-240V



**TSD-5W**  
Donut baker machine

Packing size (mm)	320*380*320
Dimension(mm)	312*222*230
N/W(kg)	8
G/W(kg)	9
Power(kW)	1.5
Volt/V	220V-240V

**TSD-6W**  
Donut baker machine

Packing size (mm)	430*380*3
Dimension(mm)	400*264*2
N/W(kg)	10
G/W(kg)	11
Power(kW)	1.5
Volt/V	220V-240V

	TCB-5	TCB-6
	Donut baker machine	
Packing size (mm)	380*320*280	410*360*280
Dimension(mm)	310*280*265	330*320*265
N/W(kg)	9	10
G/W(kg)	10	11
Power(kW)	1.5	1.5
Volt/V	220V-240V	220V-240V

# Waffle Machines



TCG-804W		TCG-801W		TCG-806W		TCG-802W	
Tree Waffle Baker		Electric Square Waffle Maker Single		Electric Square Waffle Maker Single		Electric Square Waffle Maker Double	
Packing size(mm)							
Dimension (mm)							
N/W(kg)	440*340*300 300*385*260	490*370*280 305*410*250		440*340*300 300*385*260		750*490*250 此 *250 網 (E	
G/W(kg)	9	17		9.5			
Power(kW)	10	18		10.5		41	
Volt/V	220V-240V	220V-240V		220V-240V		220V-240V	



TCG-800		TCB-5VV^		TGB*6W		TCG*815	
1-Plate Waffle Baker		Donut baker machine		Donut baker machine		Electric Contact Grill Single	
包装尺寸 Packing size (mm)	530*300*280	320*380*320		430*380*320		490*400*230	
产品尺寸 Dimension (mm) 净	265*490*185	312*222*230		400*264*230		74	
重 N/W(kg) 毛重 G/W(kg) 功率	10 9 1.1	9 9 1.5		10 1.5		20 2.5	
Power(kW) 电压 Volt/V	1.1 220V-240V	1.5 220V-240V		1.5 220V-240V		2.5 220V-240V	



# Crepe Maker

## TEC-2

### Electric Crepe Maker Double < t

Packing size (mm)	340*590*320
Dimension(mm)	360*485*230
N/W(kg)	18
G/W(kg)	15
Power(kW)	3
Volt/V	220V-240V



TGC-1		TGCdA		TECd	
	<b>A</b>		<b>A</b>		
Gas Crepe Maker Single		Gas Crepe Maker Single		Electric Crepe Maker Single	
Packing size (mm)	580*490*260	Packing size (mm)	580*450*180	Packing size (mm)	450*485*230
Dimension(mm)	450*485*230	Dimension(mm)	410*420*160	Dimension(mm)	390*415*195
N/W(kg)	15.5	N/W(kg)	12	N/W(kg)	15.5
G/W(kg)	17	G/W(kg)	13	G/W(kg)	17
Power(kW)	6	Power(kW)	3.25	Power(kW)	3
Pa	LPG2800Pa	Pa	LPG2800Pa	Volt/V	220V-240V



## TGC-2

### Gas Crepe Maker Double

Packing size (mm)	900*540*260 860*485*230
Dimension(mm)	39 49
N/W(kg)	12
G/W(kg)	LPG2800Pa
Power(kW) Pa	



## TGC-2A

### Gas Crepe Maker Double

Packing size (mm)	890*530*180 820*420*160
Dimension(mm)	24 25
N/W(kg)	10.5
G/W(kg)	LPG2800P
Power(kW) Pa	a



# Electric Bain Marie



Electric Bain Marie



KG-165		SB-6000		TBM-2	
Bain Marie		Electric Soup Warmer		Electric Soup Warmer	
Packing size (mm)	330*370*260	*SS Packing size (mm)	350*350*420	Packing size (mm)	340*500*330
Dimension (mm)	335*335*240	Dimension(mm)	300*300*360	Dimension(mm)	300x400x300
N/W(kg)	3	N/W(kg)	3	N/W(kg)	1.1
G/W(kg)	7	G/W(kg)	3	G/W(kg)	1.2
Power(kW)	1.2	Power(W/V)	0.48	Power(W/V)	1.5
Volt/V	220V-240V	Volt/V	220V-240V	Volt/V	220V-240V



BS-2T		BS-4T		BS-6T	
Electric Bain Marie		Electric Bain Marie		Electric Bain Marie	
Packing size (mm)	460*670*330	Packing size (mm)	770*670*330	Packing size (mm)	1110*670*330
Dimension (mm)	385*590*250	Dimension(mm)	700*590*250	Dimension(mm)	1035*590*250
N/W(kg)	10	N/W(kg)	15	N/W(kg)	19
G/W(kg)	18	G/W(kg)	23	G/W(kg)	29
Power(kW)	1.5	Power(kW)	1.5	Power(kW)	1.5
Volt/V	220V-240V	Volt/V	220V-240V	Volt/V	220V-240V

## Electric Bain Marie



TEM-2		TEM-2V	TEM-2V-A	TEM-2V-B
Electric Bain Marie(2-Pan)		Electric Bain Marie(2-Pan)		Electric Bain Marie(2-Pan)
Packing size (mm)				
Dimension(mm)	320*420*280	320*420*240	730*630*240	730*630*280
N/W(kg)	365*380*275(1/2*6**2)	365*380*225(1/2*4**2)	690*590*225(1/1*4**2)	700*560*270(1/1*6**2)
G/W(kg)	9	7	18	18
Power(kW) -Volt/V	1.5 220V-240V	1.5 220V-240V	1.5 220V-240V	1.5 220V-240V



### TEM-3

Electric Bain Marie(3-Pan)



Packing size (mm)	620*420*280 590*380*270 (1/3*6**3)
Dimension(mm)	8.5
N/W(kg)	9
G/W(kg)	1.5 220V-240V
Power(kW) -Volt/V	1.5 240V

	TEM-3V	TEM-3V-A
	Electric Bain Marie(3-Pan)	
Packing size (mm)		
Dimension(mm)	320*420*240	1070*420*240
N/W(kg)	560*385*225 (1/3*4**3)	1050*335*225 (1/2*4**3)
G/W(kg)	7.5	13.5
Power(kW) -Volt/V	3.5 1.5 220V-240V	14.5 1.5 220V-240V

## Electric Bain Marie



### TEM-4

Electric Bain Marie(4-Pan)

Packing size (mm)	730*630*280 700*590*270(1/2*6**4)
Dimension(mm)	18
N/W(kg)	19
G/W(kg)	1.5 220V-240V
Power(kW) -Volt/V	1.5

### TEM-4V

Electric Bain Marie(4-Pan)



Packing size (mm)	730*630*240 690*590*225 (1/2*4**4)
Dimension(mm)	18
N/W(kg)	19
G/W(kg)	1.5 220V-240V
Power(kW) -Volt/V	1.5



### TEM-6

Electric Bain Marie(6-Pan)



Packing size (mm)	730*630*280 690*590*270 (1/2*6**6)
Dimension(mm)	20
N/W(kg)	21
G/W(kg)	1.5 220V-240V
Power(kW) -Volt/V	1.5 240V

### TEM-6V

Electric Bain Marie(6-Pan)



Packing size (mm)	730*630*240 690*590*225 (1/2*4**6)
Dimension(mm)	19
N/W(kg)	20
G/W(kg)	1.5 220V-240V
Power(kW) -Volt/V	1.5 240V

## Electric Bain Marie



	FEM-4	FEM-5	FEM-6	BM-51	
<b>Electric Bain Marie</b>	<b>Electric Bain Marie</b>	<b>Electric Bain Marie</b>	<b>Electric Bain Marie</b>	<b>Electric Bain Marie</b>	
Packing size (mm)	1275*560*800	1530*560*800	1825*560*800	Packing size (mm)	1800*730*780
Dimension(mm)	1175*460*700	1430*460*700	1725*460*700	Dimension(mm)	1700*630*700
N/W(kg)	35	39	35	N/W(kg)	50
G/W(kg)	100	105	110	G/W(kg)	75
Power(kW)	3	3	3.5	Power(kW)	2
Volt/V	220V-240V	220V-240V	220V-240V	Volt/V	220V-240V

	BMC-2	BMC-3
<b>Electric Bain Marie(2-Pan)</b>	<b>Electric Bain Marie(3-Pan)</b>	
Packing size (mm)	740*510*220	1000*510*220
Dimension(mm)	335*350*370	915*350*370
N/W(kg)	12	16
G/W(kg)	13	17.5
Power(kW)	1.5	1.5
Volt/V	220V-240V	220V-240V

	BMC-4	BMC-5
<b>Electric Bain Marie(4-Pan)</b>	<b>Electric Bain Marie(5-Pan)</b>	
Packing size (mm)	1260*510*220	1530*510*220
Dimension(mm)	1180*350*370	1445*350*370
N/W(kg)	20	24.5
G/W(kg)	22	26.5
Power(kW)	1.5	1.5
Volt/V	220V-240V	220V-240V

	BMC-6	BMC-8
<b>Electric Bain Marie(6-Pan)</b>	<b>Electric Bain Marie(8-Pan)</b>	
Packing size (mm)	1800*510*220	2340*510*220
Dimension(mm)	1715*350*370	2255*350*370
N/W(kg)	28	36
G/W(kg)	30	39
Power(kW)	1.8	1.8
Volt/V	220V-240V	220V-240V



## TFW-8

### Chips Warmer

Packing size (mm)	870*800*730
Dimension(mm)	800*710*650
N/W(kg)	34
G/W(kg)	44
Power(kW) -Volt/V	0.72 220V-240V



## VF-10

### Chips Warmer

Packing size (mm)	1100*850*1620
Dimension(mm)	1000*750*1425+130
N/W(kg)	56
G/W(kg)	76
Power(kW) -Volt/V	1.6 220V-240V



TCW-310		TCW-370		TEM»2TCITEIVb3TC^	
<b>Chips Warmer</b>		<b>Chips Warmer</b>		<b>Chocolate Stove</b>	
Packing size (mm)	300*450*210	Packing size (mm)	360*590*190	Packing size (mm)	400*200*320
Dimension(mm)	345*610*600	Dimension(mm)	830*565*490	Dimension(mm)	370*180*290
N/W(kg)	7.5	N/W(kg)	8	N/W(kg)	4
G/W(kg)	8.5	G/W(kg)	7	G/W(kg)	4.5
Power(kW)	1	Power(kW)	1	Power(kW)	1.5
Volt/V	220V-240V	Volt/V	220V-240V	Volt/V	220V-240V

## Dish Warmer



WS-1



### Single door dish warmer machine

Packing size (mm)	550*540*63
Dimension(mm)	450*445*54
N/W(kg)	17
G/W(kg)	23
Power(kW)	0.4
Volt/V	220V-240V

WS-2		WS-3	
Single door dish warmer machine		Double door dish warmer machine	
Packing size (mm)	550*640*930	Packing size (mm)	850*640*9
Dimension(mm)	450*560*850	Dimension(mm)	750*560*8
N/W(kg)	33	N/W(kg)	50
G/W(kg)	43	G/W(kg)	60
Power(kW)	0.75	Power(kW)	1.2
Volt/V	220V-240V	Volt/V	220V-240V



WS-4		DR*1		DR*2	
Cups warmer machine		Plate warmer cart Single		Plate warmer cart Double	
Packing size (mm) 330*330*570		Packing size (mm) 580*470*930		Packing size (mm) 580*940*93	
Dimension(mm)	320*320*545	Dimension(mm)	425*500*890	Dimension(mm)	425*900*89
N/W(kg)	12	N/W(kg)	28	N/W(kg)	44
G/W(kg)	18	G/W(kg)	29.8	G/W(kg)	45
Power(kW)	0.14	Power(kW)	1	Power(kW)	2
Volt/V	220V-240V	Volt/V	220V-240V	Volt/V	220V-240V

## Warmer Noodle Cooker



TC*1F		T*2F		TC*2F	
(GN Pan)Warmingtray		(GN Pan)Warmingtray		(GN Pan)Warming tray	
Packing size (mm)	560*590*580	Packing size (mm)	950*590*580	Packing size (mm)	1360*590*580
Dimension(mm)	530*565*555	Dimension(mm)	910*565*555	Dimension(mm)	1325*565*555
N/W(kg)	8	N/W(kg)	12	N/W(kg)	18
G/W(kg)	14	G/W(kg)	18	G/W(kg)	28
Power(kW)	0.5	Power(kW)	1	Power(kW)	1.5
Volt/V	220V-240V	Volt/V	220V-240V	Volt/V	220V-240V



TEN\*2

### Electric Noodle Cooker Machine

Packing size (mm)	280*510*340
Dimension(mm)	215*420*310
N/W(kg)	5
G/W(kg)	6
Power(kW)-Volt/V	220-240V



FEN-6HX

### Electric Noodle Cooker

Packing size (mm)	800*700*1080
Dimension(mm)	600*700*1000
N/W(kg)	36
G/W(kg)	51
Power(kW)-Volt/V	12
Power(kW)-Pa	220V-240V



FGN.6HX

### Gas Noodle Cooker Machine

Packing size (mm)	800*700*1080
Dimension(mm)	600*700*1000
N/W(kg)	36
G/W(kg)	51
Power(kW)-Pa	12
Power(kW)-Pa	LPG2800P

## Hot-plate Cooker



THC-1		THC-1 F		THC-1 H	
1-Head cooker		1-Head cooker		1-Head cooker	
Packing size (mm)	270*380*220	Packing size (mm)	440*500*250	Packing size (mm)	700*700*550
Dimension(mm)	260*350*200	Dimension(mm)	390*415*195	Dimension(mm)	600*600*450
N/W(kg)	4	N/W(kg)	12.5	N/W(kg)	21
G/W(kg)	5	G/W(kg)	13.5	G/W(kg)	26
Power(kW)	2	Power(kW)	4	Power(kW)	4
Volt/V	220V-240V	Volt/V	220V-240V	Volt/V	380V-415V



## Fish Ball Grill



TG-1BP		TG-2BP		TG-3BP	
1-Plate Gas Fish Ball Grill		2-Plate Gas Fish Ball Grill		3-Plate Gas Fish Ball Grill	
Packing size(mm)	320*490*250	Packing size(mm)	510*490*250	Packing size(mm)	690*490*250
Dimension(mm)	270*450*200	Dimension(mm)	465*450*200	Dimension(mm)	670*450*200
N/W(kg)	9	N/W(kg)	15	N/W(kg)	23
G/W(kg)	10	G/W(kg)	16	G/W(kg)	24
Power(kW)	3	Power(kW)	12	Power(kW)	18
Volt/V	220V-240V	Volt/V	220V-240V	Volt/V	220V-240V



### TE-PP35

4.5CM Electric mini-crepe machine

Packing size (mm)	670*480*200
Dimension(mm)	640*450*180
N/W(kg)	10
G/W(kg)	11
Power(kW)	1.5
Volt/V	220V-240V

### TE-PP70

4.5CM Electric mini-crepe machine

Packing size (mm)	660*480*200
Dimension(mm)	630*450*180
N/W(kg)	19
G/W(kg)	20
Power(kW)	1.5+1.5
Volt/V	220V-240V



		TE-2BP		TE-3BP	
1-Plate Electric Fish Ball Grill		2-Plate Electric Fish Ball Grill		3-Plate Electric Fish Ball Grill	
Packing size(mm)	320*490*250	Packing size(mm)	510*490*250	Packing size (mm)	690*490*250
Dimension(mm)	270*450*200	Dimension(mm)	465*450*200	Dimension(mm)	670*450*200
N/W(kg)	9	N/W(kg)	15	N/W(kg)	23
G/W(kg)	10	G/W(kg)	16	G/W(kg)	24
Power(kW)	2	Power(kW)	4	Power(kW)	6
Volt/V	220V-240V	Volt/V	220V-240V	Volt/V	220V-240V

## Coffee Maker



**CM-0511**

Coffee Maker H	
Packing size(mm)	250*200*100
Dimension(mm)	200*170*85
N/W(kg)	1
G/W(kg)	2
Power(kW)	0.15
Volt/V	220V-240V



**CM-0521**

2-Boiler Coffee Maker	
Packing size(mm)	250*220*130
Dimension(mm)	400*200*100
N/W(kg)	1.4
G/W(kg)	2.4
Power(kW)	0.3
Volt/V	220V-240V



**CM-0510**

Coffee Maker	
Packing size(mm)	250*200*100
Dimension(mm)	200*170*85
N/W(kg)	1.4
G/W(kg)	2.4
Power(kW)	0.45
Volt/V	220V-240V



**CM-0520**

2-Boiler Coffee Maker 11	
Packing size(mm)	400*200*100
Dimension(mm)	350*170*85
N/W(kg)	2.3
G/W(kg)	3.3
Power(kW)	0.9
Volt/V	220V-240V



**CM-0523**

Coffee Maker	
Packing size(mm)	400*200*150
Dimension(mm)	350*170*135
N/W(kg)	2
G/W(kg)	3
Power(kW)	0.65
Volt/V	220V-240V

**CM-0530**

Coffee Maker	
Packing size(mm)	400*370*110
Dimension(mm)	350*340*85
N/W(kg)	4
G/W(kg)	5
Power(kW)	1.45
Volt/V	220V-240V



**ETS-4**

4-Slice Toaster	
Packing size(mm)	340*300*260
Dimension(mm)	300*220*220
N/W(kg)	4
G/W(kg)	5
Power(kW)	1.8
Volt/V	220V-240V



**ETS-6**

6-Slice Toaster	
Packing size(mm)	430*300*260
Dimension(mm)	435*220*220
N/W(kg)	5.5
G/W(kg)	6.5
Power(kW)	2.5
Volt/V	220V-240V



**AT.370 Toaster**

Toaster	
Packing size(mm)	450*350*310
Dimension(mm)	440*245*290
N/W(kg)	8
G/W(kg)	9
Power(kW)	1.7
Volt/V	220V-240V



**AT.360T**

Toaster	
Packing size(mm)	450*350*480
Dimension(mm)	440*245*475
N/W(kg)	11
G/W(kg)	12
Power(kW)	3
Volt/V	220V-240V



**TT-150**

Electric Conveyor Toaster	
Packing size (mm)	540*370*420
Dimension(mm)	500*420*410
N/W(kg)	12
G/W(kg)	13
Power(kW)	1.35
Volt/V	220V-240V



**TT-300**

Electric Conveyor Toaster	
Packing size (mm)	540*450*420
Dimension(mm)	580*420*410
N/W(kg)	13.5
G/W(kg)	15
Power(kW)	2.2
Volt/V	220V-240V



**TT-450**

Electric Conveyor Toaster	
Packing size (mm)	540*530*420
Dimension(mm)	580*420*410
N/W(kg)	16
G/W(kg)	17
Power(kW)	2.8
Volt/V	220V-240V

Gas Stove



RB-1		RB-2		RB-4	
Table Type Gas Stove		Table Type Gas Stove		Table Type Gas Stove	
Packing size (mm)	360*560*590	Packing size (mm)	340*400*390	Packing size (mm)	340*400*390
Dimension(mm)	345*540*520	Dimension(mm)	305*720*280+50	Dimension(mm)	310*720*280+50
N/W(kg)	16	N/W(kg)	17	N/W(kg)	30
G/W(kg)	25	G/W(kg)	21	G/W(kg)	38
Power(kW)	7.5	Power(kW)	15	Power(kW)	30
Pa	LPG2800Pa	Pa	LPG2800Pa	Pa	LPG2800Pa



FRC-2T

Chinese Cooking Range

Packing size (mm)	1450*900*1600
Dimension(mm)	1350*800*1500
N/W(kg)	100
G/W(kg)	50
Power(kW)	LPG2800P
Power(kW) Pa	a



RB-2

Floor Type 4-burners Gas Stove

Packing size (mm)	340*400*390
Dimension(mm)	305*720*280+50
N/W(kg)	17
G/W(kg)	21
Power(kW)	15
Power(kW) -Volt/V	LPG2800P a



Gas Stove

RB-6



Table Type Gas Stove

Packing size (mm)	840*1040*390
Dimension(mm)	910*720*280+50
N/W(kg)	44
G/W(kg)	56
Power(kW)	45
Power(kW)	LPG2800Pa
Volt/V	



YXD-GQ4



4-Burner Gas Range With Gas Oven

Packing size (mm)	800*750*1150
Dimension(mm)	750*610*1080
N/W(kg)	38
G/W(kg)	45
Power(kW)	5
Pa/V	LPG2800Pa/220-240V



YXD-EQ4



YXD-EE4

4-Burner Gas Range With Electric Oven

Packing size (mm)	800*750*1150	Packing size (mm)	800*750*1150
Dimension(mm)	750*610*1080	Dimension(mm)	750*610*1080
N/W(kg)	65	N/W(kg)	65
G/W(kg)	75	G/W(kg)	75
Power(kW)	13.3+3	Power(kW)	8.1
Pa/V	LPG2800Pa/220-240V	Volt/V	220V-240V

YXD.GQ6

6-Burner Gas Range With Gas Oven

Packing size (mm)	1000*700*1160
Dimension(mm)	900*610*1080
N/W(kg)	35
G/W(kg)	35
Power(kW)	24+5
Pa/V	LPG2800Pa/220-240V

YXD-EQ6

6-Burner Gas Range With Electric Oven

Packing size (mm)	1000*700*1160	Packing size (mm)	1000*700*1160
Dimension(mm)	900*610*1080	Dimension(mm)	900*610*1080
N/W(kg)	35	N/W(kg)	35
G/W(kg)	35	G/W(kg)	35
Power(kW)	20+3.2	Power(kW)	11.4
Pa/V	LPG2800Pa/220-240V	Volt/V	220-240V

YXD.EE6

6-Plate Electric Range With Electric Oven

# Shawarma



**PG-2**

Gas Shawarma

Packing size(mm)	750*650*800
Dimension(mm)	535*685*750
NW(kg)	25
G/W(kg)	31
Power(kW)	10
Pa/V	LPG2800Pa/220V-240V

**PG-3**

Gas Shawarma

Packing size(mm)	750*650*930
Dimension(mm)	535*685*900
NW(kg)	28
G/W(kg)	36
Power(kW)	15
Pa/V	LPG2800Pa/220V-240V

**PG-4**

Gas Shawarma

Packing size(mm)	750*650*1100
Dimension(mm)	535*685*1040
NW(kg)	31
G/W(kg)	40
Power(kW)	20
Pa/V	LPG2800Pa/220V-240V

**PG-5**

Gas Shawarma

Packing size(mm)	750*650*1290
Dimension(mm)	535*685*1260
NW(kg)	35
G/W(kg)	45
Power(kW)	25
Pa/V	LPG2800Pa/220V-240V



**PE-2**

Electric Shawarma

**PE-3**

Electric Shawarma

**PE-4**

Electric Shawarma

**PE-5**

Electric Shawarma

Packing size(mm)	750*650*820	750*650*960	750*650*1100	750*650*1290
Dimension(mm)	535*685*750	535*685*900	535*685*1040	535*685*1260
NW(kg)	23.5	28	33	37.5
G/W(kg)	30	36	41	48
Power(kW)	6.6	8	9.9	13.2
Pa/V	220V-240V	220V-240V	220V-240V	220V-240V

# Snack Machines



**EB-06**

	Popcorn machine
Packing size(mm)	600*480*800
Dimension(mm)	560*405*740
NW(kg)	10
G/W(kg)	11
Power(kW)	1.5
Volt/V	220V-240V



**EB-08**

	Popcorn machine
Packing size(mm)	550*410*720
Dimension(mm)	560*405*665
NW(kg)	10
G/W(kg)	11
Power(w)	1.5
Volts/V	220V-240V



**EB-08S**

	Popcorn machine
Packing size(mm)	550*410*720
Dimension(mm)	560*405*665
NW(kg)	10
G/W(kg)	11
Power(w)	1.5
Volts/V	220V-240V



**EB-06S**

	Popcorn machine
Packing size(mm)	600*480*800
Dimension(mm)	560*405*740
NW(kg)	10
G/W(kg)	11
Power(kW)	1.5
Volt/V	220V-240V



**FYA-809**

Electric vacuum bloating machine

Packing size(mm)	950*520*1060
Dimension(mm)	900*460*960
NW(kg)	41
G/W(kg)	33
Power(w)	38
Power(w)	0.3
Volts/V	220V-240V



**THM-212**

Hamburger Machine

Packing size(mm)	350*520*450
Dimension(mm)	405*660*290
NW(kg)	32
G/W(kg)	42
Power(w)	2.4
Volts/V	220V-240V



**TEF-10**

	Donut Fryer
Packing size(mm)	300*490*320
Dimension(mm)	285*470*300
NW(kg)	5
G/W(kg)	6
Power(kW)	2.5
Volt/V	220V-240V

# Snack Machines



THD-05	THD-07	THD-09
<b>Hot Dog Broiler</b>	<b>Hot Dog Broiler</b>	<b>Hot Dog Broiler</b>
Packing size (mm)	Packing size (mm)	Packing size (mm)
590*310*200	590*390*200	590*430*200
Dimension (mm)	Dimension (mm)	Dimension (mm)
550*250*180	550*325*180	550*400*180
N/W(kg)	N/W(kg)	N/W(kg)
5.5	8.5	10
G/W(kg)	G/W(kg)	G/W(kg)
7.5	9.5	11
Power(kW)	Power(kW)	Power(kW)
1	1.4	1.8
Volt/V	Volt/V	Volt/V
220V-240V	220V-240V	220V-240V



	TEB*19	TGB*19
<b>Hot Dog Broiler</b>	<b>Table Type Electric Lava Stone Grill</b>	<b>Table Type Gas Lava Stone Grill</b>
Packing size (mm)	Packing size (mm)	Packing size (mm)
590*510*200	550*660*390	550*660*390
Dimension (mm)	Dimension (mm)	Dimension (mm)
550*475*180	470*575*320+50	470*575*320+50
N/W(kg)	N/W(kg)	N/W(kg)
12.5	37	35
G/W(kg)	G/W(kg)	G/W(kg)
13.5	45	41
Power(kW)	Power(kW)	Power(kW)
2.2	4.5	3
Volt/V	Volt/V	Pa
220V-240V	220V-240V	PG2800Pa



888

Blender



Packing size (mm)	480*385*320
Dimension (mm)	210*255*560
N/W(kg)	6
G/W(kg)	2.2
Power(kW) Volt/V	220V-240V

# Blender



	986	998	767
	<b>Blender</b>	<b>Blender</b>	<b>Blender</b>
Packing size (mm)	480*380*320	360*360*250	340*350*320
Dimension (mm)	210*250*580	195*220*510	200*215*490
N/W(kg)	5	4	4
G/W(kg)	6	5	5
Power(kW)	2.2	1.6	1.2
Volt/V	220V-240V	220V-240V	220V-240V



TCW-1



Electric Corn Steamer



HXY-805



Electric Roaster



FWS-02



Work center

Packing size (mm)	430*430*570	Packing size (mm)	65*37*29	Packing size (mm)	1600*860*900
Dimension (mm)	400*400*530	Dimension (mm)	590*295*250	Dimension (mm)	1500*760*800
N/W(kg)	5.5	N/W(kg)	8	N/W(kg)	71
G/W(kg)	6.5	G/W(kg)	9	G/W(kg)	85
Power(kW)	2.5	Power(kW)	2.5	Power(kW)	/
Volt/V	220V-240V	Volt/V	220V-240V	Volt/V	/





STAR LEVEL ELECTRIC MILK COFFEE DISPENSERS  
Size:25.5\*35.5\*47cm

STAR LEVEL ELECTRIC MILK COFFEE DISPENSERS  
Size:25.5\*35.5\*47cm

STAR LEVEL ELECTRIC MILK COFFEE DISPENSERS  
Size:27\*40\*47cm



STAR LEVEL ELECTRIC MILK COFFEE DISPENSERS  
Size:26.5\*33\*42cm



STAR LEVEL ELECTRIC MILK COFFEE DISPENSERS  
Size:62\*38\*42cm



STAR LEVEL Visible Juice Dispensers  
Size:30\*40\*55cm



STAR LEVEL Visible Juice Dispensers  
Size:30\*40\*55cm



STAR LEVEL Visible Juice Dispensers  
Size:25.5\*36\*54cm



Royal Visual digital display electric buffet with Hydraulic Hinge food warmer  
Size:58\*44\*28cm



New Style Electric stainless steel buffet food warmer  
Size:58\*44\*28cm



Intelligent digital display electric buffet food warmer chafing dish  
Size:57\*36\*17cm

Professional manufacturer of stainless steel buffet stove



Professional manufacturer of stainless steel buffet stove



Model:RT-MK-K2  
Size:59X43.5X24Cm



Model:RT—MK—K2—1

Size:43X45X26Cm



Model:RT-XMK-K1-1

Rectangular glass lid buffet stove

Size:59X43.5X24Cm



Model:RT—MK—K3—2



Model:RT-XMK-K3

Model:RT-XMK-K2

SquM «wr MM atMB

Size:43X45X26Cm



**HYDRAULIC HINGE**  
FOR SMOOTH OPENING &  
CLOSING LID

**LID POSITION**  
OPEN UP TO MAXIMUM 90°  
STAYS OPEN AT 70°

INITIATE TO CLOSE BY PRESSING DOWN GENTLY

LID FALLS & CLOSSES AUTOMATICALLY & SILENTLY :

90° / 70°  
**WATER RETURN SYSTEM**  
CONDENSATION FLOWS BACK TO  
WATER PAN INSTEAD OF FOOD  
水汽回流系統

**1**  
**NOTCH**  
CHANGING FOOD PAN EASILY  
凹位：快捷更換食物盆位置



- With Elegant design and practical funtion.
- The dish itself can compatible with induction plates or along with matching frame for a more classic buffet environment.
- Heat source like induction plates, electrical warmer and stemo are all suitable.
- The patented hydraulic mechanism gives an extremely smooth lid motion. Gentle & silent opening & closing of lid which helps to define the class of a buffet

**E REMOVABLE COVER**

easy for cleaning and storage





Model:RT-Hx-i



Model:RT—HX-2

Size:48\*46\*17cm



Model:RT-HX-3

Size:50\*50\*17cm



Model:RT-HX-4



Model:RT-40-K1



Model:RT-40-K2

Rectangular glass lid buffet stove

Size:40\*48\*27cm

if JbKW

Size:



Model:RT-40-K3

Size:44.5\*53\*28cm



1Model:RT-40-K4

Size:43\*48\*36.5cm



Model:RT-40-Z1



Model:RT-40-Z2



Model:RT-40-GZ1



Model:RT-40-GZ2

Size:47\*48\*36.5cm

RMtangdr filmlid

MMatove

Size:62\*49\*32.5cm



Model:RT-40-Z3

Size:44.5\*53\*33cm

Rectangular glass lid buffet stove  
Size:44\*48\*32cm



Model:RT-40-Z4



Model:RT-40-GZ3

IMnodr Id MMatom

Size:44.5\*53\*37cm



Model:RT-40-GZ4

Rectangular glass lid buffet stove

Size: 43\*48.47cm

Welcome to OEM!



Model:RT-TGKS723

Stainless steel rectangular hydraulic furnace  
Size:565 x 430 x 290mm



JY723

JY722

Model:RT-TGKS723

Stainless steel rectangular hydraulic furnace  
Size: 565 x 430 x 290mm

Model:RT-TGKS722  
Size:390 x 435 x 290mm



Model:RT-TGKS722

Stainless steel square hydraulic furnace  
Size:390 x 435 x 290mm



JY721



JY721

Model:RT-TGKS721

Stainless steel round hydraulic furnace  
Size:470 x 430 x 270mm

Model:RT-TGKS720

ItandrtMHBMrtdMI  
Size:470 x430x 270mm



C

Model:RT-TGKS721

Stainless steel round hydraulic furnace  
Size:470 x 430 x 270mm



S016DJ-2

016DJ

Model:RT-S016DJ-1/2

Size:59X43.5X21cm



S016-2

016

Model:RT-S016-1/2

Rectangular perspective buffet stove

Size:59X43.5X21Cm



S018DJ

S018DJ-2

Model:RT-S018DJ

Size:45.5X49X25Cm



S018

S018-2

Model:RT-S018

Size:45.5X49X25Cm



S017DJ

017DJ

Model:RT-S017DJ

Size:43X45X23Cm



S017

017

Model:RT-S017

Size:43X45X23Cm

Welcome to OEM!

欢迎客户来图来样定做!  
Welcomed Tiers to map sample order!



016DJ-2

016DJ 上身

Model:RT-F016DJ-1/2

MMgdvgoM pM<l paapMlwB  
WMAmB

Size:59X43.5X31Cm



016-2

016-1

016

Model:RT-F016-1/2

Size:59X43.5X31Cm



017DJ-1

017DJ上身

017-1

017上身

61593

60593

61593

60593

018DJ-1

018DJ

Model:RT-F017DJ

Model:RT-F017

Model:RT-61593DJ-1/2

Model:RT-61593-1/2

<Md PtaH  
panpMlw  
MM atwe

Size:42.5X42.5X31Cm

IMnp\*r flaae ■ MMB

Size:59X43 5X21Cm



018DJ-1

018DJ±身

018-1

018-2

018 ±身

61293

60293

61293

60293

Model:RT-F018DJ

Model:RT-F018

Model:RT-61293DJ

Model:RT-61293

Round Square Gold Plated perspective buffet stove

Size:44.5X45X31Cm

Size:44.5X45X31Cm

Size:43X45X23Cm

Size:43X45X23Cm



62593

60593

62593

60593

62293

018-1

018-2

018 上身

51293-1

50293

51293-1

50293

Model:RT-62593DJ-1/2

Model:RT-62593-1/2

Model:RT-51293DJ

Model:RT-51293

Size:59X43.5X31Cm

Round glass cover buffet stove

Size:45.5X49X25Cm

Round glass cover buffet stove

Size:45.5X49X25Cm



62293

60293

60293

52293

50293

52293

50293

Model:RT-62293DJ

Model:RT-62293

Size:42.5X42.5X31Cm

Model:RT-52293DJ

Round square buffet stove

Size:44.5X45X31Cm

Model:RT-52293

Round square buffet stove

Size:44.5X45X31Cm

Size:42.5X42.5X31Cm



6801-1DJ

6801-2DJ

6808DJ

6801-1

6801-2

6808

6801-1KSDJ

6801-2KSDJ

6801-1KS

6801-2KS

6808KS

Model:RT-  
Size:63X43X43Cm

Model:RT-6801-1/2

Model:RT-6801KSDJ

Model:RT-6801KS-1/2

paapMIwB MMAnB

680



6803DJ

6803-2DJ

6806DJ

6803

6803-2

6806

6803KSDJ 6803-2KSDJ 6806KSDJ

6803KS

6803KS-2

6806KS

Model:RT-6803DJ

Model:RT-6803

Model:RT-6803KSDJ

Model:RT-6803KS

Size:47.5X47.5X47Cm

Size:47.5X47.5X47Cm

Size:47.5X47.5X47Cm

Size:47.5X47.5X47Cm



6501DJ-1 6501DJ-2 6508DJ

Model:RT-6501DJ  
WMstove

Size:63X50X45Cm



6503DJ 6503DJ-2 6506DJ

Model:RT-6503DJ

Size:47.5X47.5X45Cm



6501-1 6501-2 6508

Model:RT-6501

RHM oolum MVwmt\* Vdw©

Size:63.5X50X44Cm



6503 6503-2 6506

Model:RT-6503

Size:47.5X47.5X45Cm

Webshop by OSM

Size:47.5X47.5X45Cm

5X45Cm



723DJ-1 723DJ-2 728DJ

Model:RT-723DJ

Size:63.5X48X42Cm



723-1 723-2 728

Model:RT-723-1/2

Size:63.5X48.5X42Cm



721DJ 721DJ-2 720DJ

Model:RT-721DJ

Size:47X47X46Cm

Size:47X47X46Cm



721 721-2 720

Model:RT-721

Size:47X47X46Cm

Size:47X47X46Cm



723KSDJ-1 723KSDJ-2 728KSDJ

723KS-1 723KS-2 728KS

723B-1 723B-2 728B

723BDJ-1 723BDJ-2 728BDJ

Model:RT-723KSDJ

Size:63.5X48.5X42Cm

Model:RT-KS723-1/2

Model:RT-723B

I MM atom

Size:64X42X45Cm

Model:RT-723BDJ

Size:64X42X45Cm



Size:63.5X48.5X42Cm



721KSDJ 721KSDJ-2 720KSDJ

721KS 721KS-2 720KS

721B 721B-2 720B

721BDJ 721BDJ-2 720BDJ

Model:RT-721KSDJ

Size:47X47X46Cm

Model:RT-KS721

Rwid ■ aM wtouri  
MMatom

Size:47X47X46Cm

Model:RT-721B

Size:47X48X47Cm

Model:RT-721BDJ

Size:47X48X47Cm



723BKSDJ-1 723BKSDJ-2 728BKSDJ

Model:RT-723BKSDJ

Rectangular gold plated perspective buffet stove

Size:64X42X45Cm



723BKS-1 723BKS-2 728BKS

Model:RT-723BKS

FGMM

Size:64X42X45Cm



60663-1 60663-2 60683

Model:RT-60663

Rectangular stainless steel buffet stove



60663KS-1 60663KS-2 60683KS

Model:RT-60663KS

Rectangular stainless steel buffet stove

Size:66X42X42Cm



721BKSDJ 721BKSDJ-2 720BKSDJ

Model:RT-721BKSDJ

Size:47X48X47Cm



721BKS 721BKS-2 720BKS

Model:RT-721BKS

Size:47X48X47Cm



50663 50663-2 50683

Model:RT-50663

Size:51.5X45X42Cm



50663KS 50663KS-2 50683KS

Model:RT-50663KS

Round all steel visual buffet stove

Size:51.5X45X42Cm



733DJ-1 733DJ-2 738DJ



733-1 733-2 738

Model:RT-733



KS733DJ-1 KS733DJ-2 KS738DJ

Model:RT-KS733DJ

Size:69.5X45X45Cm



KS733-1 KS733-2 KS738

Model:RT-KS733

Size:69.5X45X45Cm

Model:RT-733DJ

Size:69.5X45X45Cm



731DJ 730DJ

Model:RT-731DJ

Size:47.5X47.5X47Cm



731 730

Model:RT-731

Size:47.5X47.5X47Cm



KS731DJ KS730DJ

Model:RT-KS731DJ

Rnnd 0oM ptaM panpMWe MMAlMb

Size:47.5X47.5X47Cm



KS731 KS730

Model:RT-KS731

RvumI aM paapMIMB MMIMB

Size:47.5X47.5X47Cm



6801DDJ-1 6801DDJ-2 6808DDJ

Model:RT-6801DDJ

Size:63X43X43Cm



6801D-1 6801D-2 6808D

Model:RT—6801D

Rectangle all steel electric heating buffet stove

Size:63X43X43Cm



6801DKSDJ-1 6801DKSDJ-2 6808DKSDJ

Model:RT-6801DKSDJ

Size:63X43X43Cm



6801DKS-1 6801DKS-2 6808DKS

Model:RT-6801DKS

Size:63X43X43Cm

Model:RT-6801DKS



6803DDJ 6803DDJ-2 6806DDJ

Model:RT-6803DDJ

Size:47.5X47.5X47Cm



6803D 6803D-2 6806D

Model:RT-6803D

RnndalaiMIWMftM B

Size:47.5X47.5X47Cm



6803DKSDJ 6803DKSDJ-2 6806DKSDJ

Model:RT-6803DKSDJ

tad goM pttidwIMI aMtoWhg MMatoM

Size:47.5X47.5X47Cm



6803DKS 6803DKS-2 6806DKS

Model:RT-6803DKS

Size:47.5X47.5X47Cm



6501DDJKS-1 6501DDJKS-2 6508DDJKS

**Model:RT-6501DDJKS**

Size:63.5X50X44Cm



6501D-1 6501D-2 6508D

**Model:RT-6501D**

Size:63.5X50X44Cm



60663-1 60663-2 60683

**Model:RT-60663**

Size:66X42.5X43Cm



60663KS-1 60663KS-2 60683KS

**Model:RT-60663KS**

Size:66X42.5X43Cm



6503DDJKS 6503DDJKS-2 6506DDJKS

**Model:RT-6503DDJKS**

Size:47.5X47.5X45Cm



6503D 6503D-2 6506D

**Model:RT-6503D**

Size:47.5X47.5X45Cm



50663 50663-2 50683

**Model:RT-50663**

Size:52X45X44Cm



50663KS 50663KS-2 50683KS

**Model:RT-50663KS**

Size:51X55X44Cm



723D-1 723D-2 728D



723DKS-1 723DKS-2 728DKS

Model:RT-723D  
Size:63.5X48.5X42Cm

Model:RT-723DKS  
Size:63.5X48.5X42Cm



Model:RT-723DRKS  
Size: 59X43.5X30Cm



Model:RT-722DRKS  
Square digital display and thermoelectric  
Size:43X45X33Cm



721D 721D-2 720D



721DKS 721DKS-2 720DKS

Model:RT-721D  
Size:47X47X46Cm

Model:RT-721DKS



Model:RT-721DRKS



723BDDJ-1 723BDDJ-2 728BDDJ



723BD-1 723BD-2 728BD



723BDDJKS-1 723BDDJKS-2 728BDDJKS



723BDKS-1 723BDKS-2 728BDKS

Model:RT-723BD

Rectangle all steel electric heating buffet stove

Size:64X42X45Cm

Model:RT-723BDDJKS

Rectangle all steel electric heating buffet stove

Size:64X42X45Cm

Model:RT-723BDKS

Rectangle all steel electric heating buffet stove

Size:64X42X45Cm

Model:RT-723BDDJ

Size:64X42X45Cm



721BDDJ 721BDDJ-2 720BDDJ



721BD 721BD-2 720BD



721BDDJKS 721BDDJKS-2 720BDDJKS



721BDKS 721BDKS-2 720BDKS

Model:RT-721BD

Round all steel electric heating buffet stove

Size:47X48X47Cm

Model:RT-721BDDJKS

Round all steel electric heating buffet stove

Size:47X48X47Cm

Model:RT-721BDKS

Royi vtoul «Mrio haaftig bMatove

Size:47X48X47Cm

Model:RT-721BDDJ

Size:47X48X47Cm



6601-1 6601-2 6606

Model:RT-6601



6202-1 6202-2

Model:RT-6202

Digital display buffet stove with round disc

Size:45.5X49X25Cm



61061-1 61061-2 61081

Model:RT-61061

Size:66X50X43Cm



61061KS-1 61061KS-2 61081KS

Model:RT-61061KS

Size:66X42X42Cm



6603 6603-2 6606

Model:RT-6603

Size:51.5X45X42Cm



6204-1

Model:RT-6204

方



51061 51061-2 51081

Model:RT-51061

Size:51X55X44Cm



51061KS 51061KS-2 51081KS

Model:RT-51061KS

Size:51.5X45X42Cm



60681-1 60681-2 60688

Model:60681

Size:66X50X40Cm



60681KS-1 60681KS-2 60688KS

Model:60681KS

Rectangular Gold Plated / Plated visual buffet stove

Size:66X50X40Cm



50681 50681-2 50680

Model:50681

Size:51X55X44Cm



50681KS 50681KS-2 50680KS

Model:50681KS

Ah chvgad,  
dhrivMMfto  
m

Size:51X55X44Cm



Model:RT-S016D cover top meal stove

Size:60X47X29.5Cm



Model:RT-S017D top dining stove

Size:47X44X30Cm



Model:RT-S018D

Size:47X54X29Cm



Model:RT-S019D



Model:RT-10-12D  
12L

Size: 35X30X49.5Cm



Model:RT-10-19D  
12L

Size:47X44X29.5Cm



Model:RT-10-13D  
13L

Size:28.5X26.5X63.5Cm



Model:RT-831

Round buffet stove



Model:RT-835

Round buffet stove



Model:RT-835H

Round buffet stove



Model:RT-8311/8307

Round buffet stove



Model:RT-433+W900

Rectangular buffet stove



Model:RT-533+W900

Rectangular buffet stove



Model:RT-533DJ+W900

Rectangular gold plated buffet stove



Model:RT-433

Rectangular buffet stove



Model:RT-833

Rectangular buffet stove



Rectangular disassembly and assembly buffet stove

Model:RT-823

Rectangular buffet stove



Model:RT-433+W900PC

Rectangular buffet stove



Model:RT-533+W900PC

Rectangular buffet stove



Model:RT-533DJ+W900PC

Rectangular gold plated buffet stove



Model:RT-533DJ

Rectangular gold plated buffet stove



Model:RT-533

Rectangular buffet stove



Model:RT-823

Rectangular buffet stove



Model:RT-833+W900

Rectangular buffet stove



Model:RT-533+W900

Rectangular disassembly and assembly buffet stove



Model:RT-823+W900

Rectangular buffet stove



Model:RT-7023

Rectangular buffet stove



Model:RT-538

Rectangular double head soup furnace



Model:RT-838

Rectangular double head soup furnace



Model:RT-833+W900PC

Rectangular buffet stove



Model:RT-533+W900PC

Rectangular disassembly and assembly buffet stove



Model:RT-823+W900PC

Rectangular buffet stove



Model:RT-828

Rectangular double head soup furnace



Model:RT-538DJ

Rectangular gold plated double headed soup furnace



Model:RT-438

Rectangular double head soup furnace



Model:RT-7022+W900PC

Rectangular buffet stove



Model:RT-7022+W900

Rectangular buffet stove



Model:RT-438

Rectangular double head soup furnace



Model:RT-731E

Round embedded full flip luxurious dining stove

Size:48X53X27Cm



Model:RT-733E

Rectangular embedded full flip luxurious dining stove

Size:63X47.5X23.5Cm



Model:RT-736

Oval full flip lunch stove

Size:65X55X46.5Cm



Model:RT-736BDJ

Oval full flip gold plated oven

Size:65X55X47Cm



Model:RT-726

Rectangular embedded full flip luxurious dining stove

Size:41X38X37Cm



Model:RT-722

Square full flip luxurious dining stove

Size:48.5X47X44.5Cm



Model:RT-666

Round rotating buffet chafer

Size:55x53x28cm



Model:RT-888

Round hoisting lid buffet chafer



RT-4172



RT-4171



RT-4140  
140mm\*180mm\*200mm



RT-4173  
150mm 200mm



RT-4202



RT-4200



RT-9423  
6/8/10/12/14



RT-9423  
6/8/10/12/14



RT-9438



RT-9422



RT-9432  
4/6/8/10/12



RT-9442



RT-9443



RT-9444  
H 170mm



6/8/10/12/14

RT-9445

H 100mm



4/6/8/10/12

RT-9446



RT-9451

40\*25\*H12mm

30/2(TH10mm)



RT-9436



RT-9450

40.25\*H22mm



RT-9426



RT-9455

25\*25\*H25mm

H160mm



RT-9455  
70\*7(TH60mm)  
5(T50\*H45mm)



RT-9455

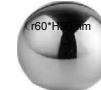
25\*25\*H25mm

H160mm



RT-9298

D3CFH45mm



RT-9455

D30\*H25mm

D3CFH45mm



Model:RT-D01-1/E01-1



Model:RT-C01-1G



Model:RT-C01-2G



Model:RT-B01-1G

Model:FT-B01-2G

Model:RT-B01-1G

Model:RT-B01-4G

**Lighting type warm food lamp**

kg:250W  
 Size: 165 x 390mm/165 x 250mm  
 165 x 250 mm / 279 x 250 mm  
 temperature range:30-60°C



Model:RT-A01-1G

**Stainless**

kg: 250W  
 Size:270x700H (mm)



Model:RT-A02-2G

**Stainless steel double head insulation lamp**

kg:500W  
 Size:270 x 700H ( mm )



Model:RT\_A01 - 2G

**Single head gold plated thermal insulation station Double head gold plated thermal insulation station Three gold plated thermal insulation station Four gold plated thermal insulation station**



Model:RT-GZ01

Model:RT-GZ02DJ

Model:RT-GZ03

**Marble single head insulation table**

kg:650W  
 Size: 550 x 500 x 750H ( mm )



Model:RT-A01-1

**Marble double head insulation table**

kg:500W  
 Size: 550 x 500 x 750H ( mm )



Model:RT-A02-2

**Marble double head insulation table**

kg:500W  
 Size:550 x 500 x 750H ( mm )



Model:RT-A01-2

**Single head all steel juice dispenser**

Size:35X26X58Cm



Model:RT-YZ01DJ

**Double head gold plated juice dispenser**

Size:35X26X58Cm



Model:RT-YZ02DJ

**Three head all steel juice dispenser**

Size:56X35X58Cm



Model:RT-YZ02

**Marble single head insulation table**

kg:250W  
 Size:550x500x750H ( mm )

**Marble double head insulation table**

kg:500W  
 Size:550 x 500 x 750H ( mm )

**Marble double head insulation table**

kg:500W  
 Size:550 x 500 x 750H ( mm )

**Single head cylindrical gold-plated fruit juice dispenser**

Size:35X26X58Cm

**Double head cylindrical gold-plated fruit juice dispenser**

Size:61X31X50Cm

**three heads all round stainless steel dispenser**

Size:62X31X50Cm



Model:RT-YZ02  
Remarks: 4  
Size:23.5X23.5X35Cm 23.5X23.5X52.5Cm  
23.5X23.5X69Cm 23.5X23.5X87Cm



Model:RT-YZ01  
Single head octagonal full steel juice dispenser  
Size:35X26X58Cm



Model:RT-YZ02  
Three head octagonal full steel juice dispenser  
Size:62X31X50Cm



Model:RT-12  
12L all steel coffee dispenser  
Size:28X28X50Cm



Model:RT-12P  
12L all steel hot and cold juice dispenser  
Size:28X28X50Cm



Model:RT-1X9  
Single head all steel / gold-plated milk dispenser  
Size:35X26X55Cm



Model:RT-2X9  
Double head all steel / Gold Plated milk dispenser  
Size:35X26X55Cm



Model:RT-GLY-1/GRY-1  
KG:70W  
CY:6L



Model:RT-GLY-2/GRY-2/GLR-Y  
KG:140W  
CY:6L



Model:RT-GLF-1/GRF-1  
KG:70W  
CY:6L



Model:RT-GLF-2/GRF-2  
KG:70W  
CY:6L



Model:RT-05  
5L single head European style fruit juice tripod  
Size:20X23.5x68Cm



Model:RT-2X05  
2x5L double headed European juice tripod  
Size:34x23.5x68Cm



Model:RT-3X05  
3x5L three European style juice tripod  
Size:50x23.5x68Cm



Model:RT-07  
7L heating juice tripod  
Size:21.5x31.5x57Cm



Model:RT-07  
7L refrigeration fruit juice tripod  
Size:21.5x31.5x57Cm



Model:RT-08  
V type fruit juice tripod  
Size:30X30X56Cm



Model:RT-19  
All steel coffee pot  
Size:35X31X62Cm



Model:RT-MP1-12  
12L single head CEREAL DISPENSER  
Size: 23X36X62Cm



Model:RT-MP2-12  
12L double head cereal distributor  
Size: 54X35.5X62Cm



Model:RT-MP4  
5.5L three head CEREAL DISPENSER  
Size:57X23X64Cm



Model:RT-13/13DJ  
Plated / gilded coffee dispenser  
Size: 30X30X56Cm



Model:RT-12L/16L  
The foot of the top coffee dispenser  
Size:30X30X56Cm



Model:RT-12L/16L  
Luxury coffee dispenser  
Size: 30X30X56Cm



Model:RT-MP1  
5.5L single head CEREAL DISPENSER  
Size: 20X22X64Cm



Model:RT-MP2  
5.5L double head cereal distributor  
Size: 33.5X23X64Cm



Model:RT-MP3  
5.5L three head CEREAL DISPENSER  
Size: 50X23X64Cm



Model:RT-SK-6000DA

13L stainless steel soup warmer  
Size:48X48X48Cm



Model:RT-SK-6 B

13L stainless steel soup warmer  
Size:48X48X48Cm



Model:RT-SK-6 DC

13L stainless steel soup warmer  
Size:48X48X48Cm



/Model	/Size
16	41.5X29
18	48.5X32
20	52.5X36.5
22	57.5X40.5



Model:RT-SK-600BD

10L steel soup pot  
Size:37X37X38Cm



Model:RT-SK-600DE

10L yellow bronze soup pot  
Size:37X37X38Cm



Model:RT-SK-6000DF

13L stainless steel soup warmer  
Size:48X48X48Cm



Model:RT-SK-6000DG

13L stainless steel soup warmer  
Size:48X48X48Cm



Model:RT-SK-6000DH

13L stainless steel soup warmer  
Size:48X48X48Cm



Model:RT-SK-6000AI

13L black soup pot  
Size:39X39X40Cm



/Model	/Size
16	41.5X29
18	48.5X32
20	52.5X36.5
22	57.5X40.5



Model:RT-SK-6 BJ

13L black soup pot  
Size:41X41X42Cm



Model:RT-SK-6000CK

10L yellow bronze soup warmer  
Size:48X48X48Cm



Model:RT-SK-L

13L stainless steel soup warmer  
Size:48X48X48Cm



Model:RT-121-7



Stainless steel display platform

Size: 53 x33x 28Cm  
CY:9L



## U5 Anti-jam BN Pans



Quality Stainless Steel Materials  
Edge  
Good Deep Draw  
Enhanced  
Technology

Manufactured to BS EN631-1 Specifications

1/1

ITEM	Depth	SPEC	Thickness	Capacity	QTY/CTN
1125A	65	530x325	0.6	8.5	12
1104A	100	530x325	0.6	13.5	12
1106A	150	530x325	0.6	20.5	12
1108A	200	530x325	0.6	27.0	12
1125AQ	65	530x325	0.8	8.5	12
1104AQ	100	530x325	0.8	13.5	12
1106AQ	150	530x325	0.8	20.5	12
1108AQ	200	530x325	0.8	27.0	12

1/2

ITEM	Depth	SPEC	Thickness	Capacity	QTY/CTN
1225A	65	325x265	0.6	4.5	18
1204A	100	325x265	0.6	7.0	18
1206A	150	325x265	0.6	10	18
1208A	200	325x265	0.6	13	18
1225AQ	65	325x265	0.8	4.5	18
1204AQ	100	325x265	0.8	7.0	18
1206AQ	150	325x265	0.8	10	18
1208AQ	200	325x265	0.8	13	18

1/3

ITEM	Depth	SPEC	Thickness	Capacity	QTY/CTN
1325A	65	325x176	0.6	2.5	18
1304A	100	325x176	0.6	4.0	18
1306A	150	325x176	0.6	6.0	18
1308A	200	325x176	0.6	8.0	18
1325AQ	65	325x176	0.8	2.5	18
1304AQ	100	325x176	0.8	4.0	18
1306AQ	150	325x176	0.8	6.0	18
1308AQ	200	325x176	0.8	8.0	18

1/4

ITEM	Depth	SPEC	Thickness	Capacity	QTY/CTN
1425A	65	265x162	0.6	1.8	24
1404A	100	265x162	0.6	3.0	24
1406A	150	265x162	0.6	4.5	24
1425AQ	65	265x162	0.8	1.8	24
1404AQ	100	265x162	0.8	3.0	24
1406AQ	150	265x162	0.8	4.5	24

1/6

ITEM	Depth	SPEC	Thickness	Capacity	QTY/CTN
1625A	65	176x108	0.6	1.0	36
1604A	100	176x108	0.6	1.7	36
1606A	150	176x108	0.6	2.5	36
1625AQ	65	176x108	0.8	1.0	36
1604AQ	100	176x108	0.8	1.7	36
1606AQ	150	176x108	0.8	2.5	36

1/9

ITEM	Depth	SPEC	Thickness	Capacity	QTY/CTN
1925A	65	176x108	0.6	1.0	48
1904A	100	176x108	0.6	1.5	48
1906A	150	176x108	0.6	2.0	48
1925AQ	65	176x108	0.8	1.0	48
1904AQ	100	176x108	0.8	1.5	48
1906AQ	150	176x108	0.8	2.0	48

## LID FOR US STYKE GN PAN



C	Cover Lid
EP	W/O Electric Polishing
SD	Heavy Lid
N	Notched Lid



1/1

ITEM	SPEC (MM)	Thickness (MM)	QTY/CTN
1101C	530x325	0.6	12
1101CP	530x325	0.6	12
1101CQ	530x325	0.8	12



1/2

ITEM	SPEC (MM)	Thickness (MM)	QTY/CTN
1201	325x265	0.6	18
1201P	325x265	0.6	18
1201Q	325x265	0.8	18

1/3

ITEM	SPEC (MM)	Thickness (MM)	QTY/CTN
1301C	325x176	0.6	18
1301CP	325x176	0.6	18
1301CQ	325x176	0.8	18

1/4

ITEM	SPEC (MM)	Thickness (MM)	QTY/CTN
1401	265x162	0.6	24
1401Q	265x162	0.8	24

1/6

ITEM	SPEC (mm)	Thickness (mm)
1601C	176x162	0.6
1601CQ	176x162	0.8
1601CN	176x162	0.6

1/9

ITEM	SPEC (MM)	Thickness (MM)	QTY/CTN
1901	176x108	0.6	48
1901Q	176x108	0.8	48

Adaptor Bar



2/1 Europe Perforated Gastronorm Pans 2/1

ITEM	SPEC (MM)	Depth (MM)	Thickness (MM)	MEAS (MM)	PCS/CTN
1001AE	650x530x20	20	0.8	660x545x70	6
1015AE	650x530x40	40	0.8	660x545x130	6
1025AE	650x530x65	65	0.8	660x545x150	6
1004AE	650x530x100	100	0.8	660x545x250	6
1006AE	650x530x150	150	0.8	660x545x310	6
1008AE	650x530x200	200	0.8	660x545x360	6

1/1 Europe Perforated Gastronorm Pan 1/1

ITEM	SPEC (MM)	Depth (MM)	Thickness (MM)	MEAS (MM)	PCS/CTN
EP 1101A	530x325x20	20	0.6	550x340x50	6
EP 1115A	530x325x40	40	0.6	550x340x90	6
EP 1125A	530x325x65	65	0.6	550x340x110	6
EP 1104A	530x325x100	100	0.6	550x340x240	6
EP 1106A	530x325x150	150	0.7	550x340x280	6
EP 1108A	530x325x200	200	0.7	550x340x340	6

1/1 US Perforated Gastronorm Pan 1/1

ITEM	SPEC (MM)	Depth (MM)	Thickness (MM)	MEAS (MM)	PCS/CTN
SP 1101A	530x325x20	20	0.6	550x340x50	6
SP 1115A	530x325x40	40	0.6	550x340x90	6
SP 1125A	530x325x65	65	0.6	550x340x110	6
SP 1104A	530x325x100	100	0.6	550x340x240	6
SP 1106A	530x325x150	150	0.6	550x340x280	6
SP 1108A	530x325x200	200	0.6	550x340x340	6

1/1 US Anti-Jam. Perforated GN Pan 1/1

ITEM	SPEC (MM)	Depth (MM)	Thickness (MM)	MEAS (MM)	PCS/CTN
A2P 1101A	530x325x20	20	0.6	550x340x50	6
A2P 1115A	530x325x40	40	0.6	550x340x90	6
A2P 1125A	530x325x65	65	0.6	550x340x110	6
A2P 1104A	530x325x100	100	0.6	550x340x240	6
A2P 1106A	530x325x150	150	0.6	550x340x280	6
A2P 1108A	530x325x200	200	0.6	550x340x340	6



2/3 Europe Perforated Gastronorm Pan 2/3

ITEM	SPEC (MM)	Depth 深度 (MM)	Thickness 厚度 (MM)	MEAS (MM)	PCS/CTN
EP 13201A	353x325x20	20	0.6	680x375x70	12
EP 13215A	353x325x40	40	0.6	680x375x110	12
EP 13225A	353x325x65	65	0.6	680x375x140	12
EP 13204A	353x325x100	100	0.6	680x375x260	12
EP 13206A	353x325x150	150	0.7	680x375x310	12
EP 13208A	353x325x200	200	0.7	680x375x360	12



2/3 US Perforated Gastronorm Pan 2/3

ITEM	SPEC (MM)	Depth (MM)	Thickness (MM)	MEAS (MM)	PCS/CTN
SP 13201A	353x325x20	20	0.6	680x375x70	12
SP 13215A	353x325x40	40	0.6	680x375x110	12
SP 13225A	353x325x65	65	0.6	680x375x140	12
SP 13204A	353x325x100	100	0.6	680x375x260	12
SP 13206A	353x325x150	150	0.6	680x375x310	12
SP 13208A	353x325x200	200	0.6	680x375x360	12



2/3 US Anti-Jam. Perforated GN Pan 2/3

ITEM	SPEC (MM)	Depth (MM)	Thickness (MM)	MEAS (MM)	PCS/CTN
SP 13201A	353x325x20	20	0.6	680x375x70	12
SP 13215A	353x325x40	40	0.6	680x375x110	12
SP 13225A	353x325x65	65	0.6	680x375x140	12
SP 13204A	353x325x100	100	0.6	680x375x260	12
SP 13206A	353x325x150	150	0.6	680x375x310	12
SP 13208A	353x325x200	200	0.6	680x375x360	12



1/2 Europe Perforated Gastronorm Pan 1/2

ITEM	SPEC (MM)	Depth (MM)	Thickness (MM)	MEAS (MM)	PCS/CTN
REP 1201	325x265x20	20	0.6	570x350x70	2
REP 1215	325x265x40	40	0.6	570x350x110	2
REP 1225	325x265x65	65	0.6	570x350x140	2
REP 1204	325x265x100	100	0.6	570x350x260	2
REP 1206	325x265x150	150	0.7	570x350x310	2
REP 1208	325x265x200	200	0.7	570x350x360	2

1/3 Europe Perforated Gastronorm Pan 1/3

ITEM	SPEC (mm)	Depth (mm)	Thickness (mm)	MEAS (mm)	N	PCS/CT
EP 1301A	325x178x20	20	0.6	570x350x70	3	18
EP 1315A	325x178x40	40	0.6	570x350x110	3	18
EP		AS	ne	570x350x140	3	18
EP			>	570x350x260	3	18
EP				570x350x210	3	18
EP 1308A	325x178x200	200	0.7	570x350x360	3	18

1/3 US Perforated Gastronorm Pan 1/3

1/3 US Anti-Jam. Perforated GN Pan 1/3

ITEM	SPEC (MM)	Depth (MM)	Thickness (MM)	MEAS (MM)	PCS/CTN	HEM	SPEC (MM)	Depth (MM)	Thickness (MM)	MEAS (MM)	PCS/CTN	
ASP 1301	325x178x20	20	0.6	570x350x70	18	P	1301A2	325x178x20	20	0.6	570x350x70	18
P 1315AS	325x178x40	40	0.6	570x350x110	18	P	1315A2	325x178x40	40	0.6	570x350x110	18
P 1325AS	325x178x65	65	0.6	570x350x140	18	P	1325A2	325x178x65	65	0.6	570x350x140	18
P 1304AS	325x178x100	100	0.6	570x350x260	18	P	1304A2	325x178x100	100	0.6	570x350x260	18
P 1306AS	325x178x150	150	0.6	570x350x310	18	1A2P	1306A2	325x178x150	150	0.6	570x350x310	18
P 1308ASP	325x178x200	200	0.6	570x350x360	18	P	1308A2	325x178x200	200	0.6	570x350x360	18



White electrothermal Basin



White electrothermal basin \* plastic half cover



Rectangular SS steel electrothermal Basin



Rectangular band display SS steel



SS steel electrothermal basin with circular belt



Rectangular electric heating plate



Rectangle temperature controlled electric heating plate



Octagonal electrothermal plate



Octagonal temperature control electric heating board



Circular electric heating plate A



Circular temperature control electric heating plate A



Circular electric heating plate B



Circular temperature control electric heating plate B



Spring electric plate



heating Spring temperature control electric heating board



18Cm electromagnetic



24.5Cm electromagnetic furnace controlled by wire



1/1 x 6.5

1/1 \* 6.5 punching



1/2x6.5

1/2 \* 6.5 punching



Round dividing dish



Round food plate



Circular ceramic disk



Circular lattice ceramic disk



Circular S cell ceramic disk



1/1X 6.5



2/3 x 6.5

2/3 x 6.5 ceramic disk



1/2 x 6.5

1/2 x 6.5 ceramic disk



1/3 x 6.5

1/3 x 6.5 ceramic disk



Sector grid



Welcome to OCM Square grid



Single plug



Plastic bucket, double knife and fork box



Plastic bucket, three square



Plastic bucket, four square knife and fork box



Plastic bucket five



Plastic bucket with four rows of knives and forks box



Plastic bucket with six rows of knives and forks box



Double drum four knife and fork box



Four steel lattice knife and fork box



B011

B812



Stainless steel frame A



Stainless steel frame B



Stainless steel frame C



Stainless steel frame D



Stainless steel frame E



Stainless steel frame F



B083



steel frame G



Stainless steel frame H



B003



B001

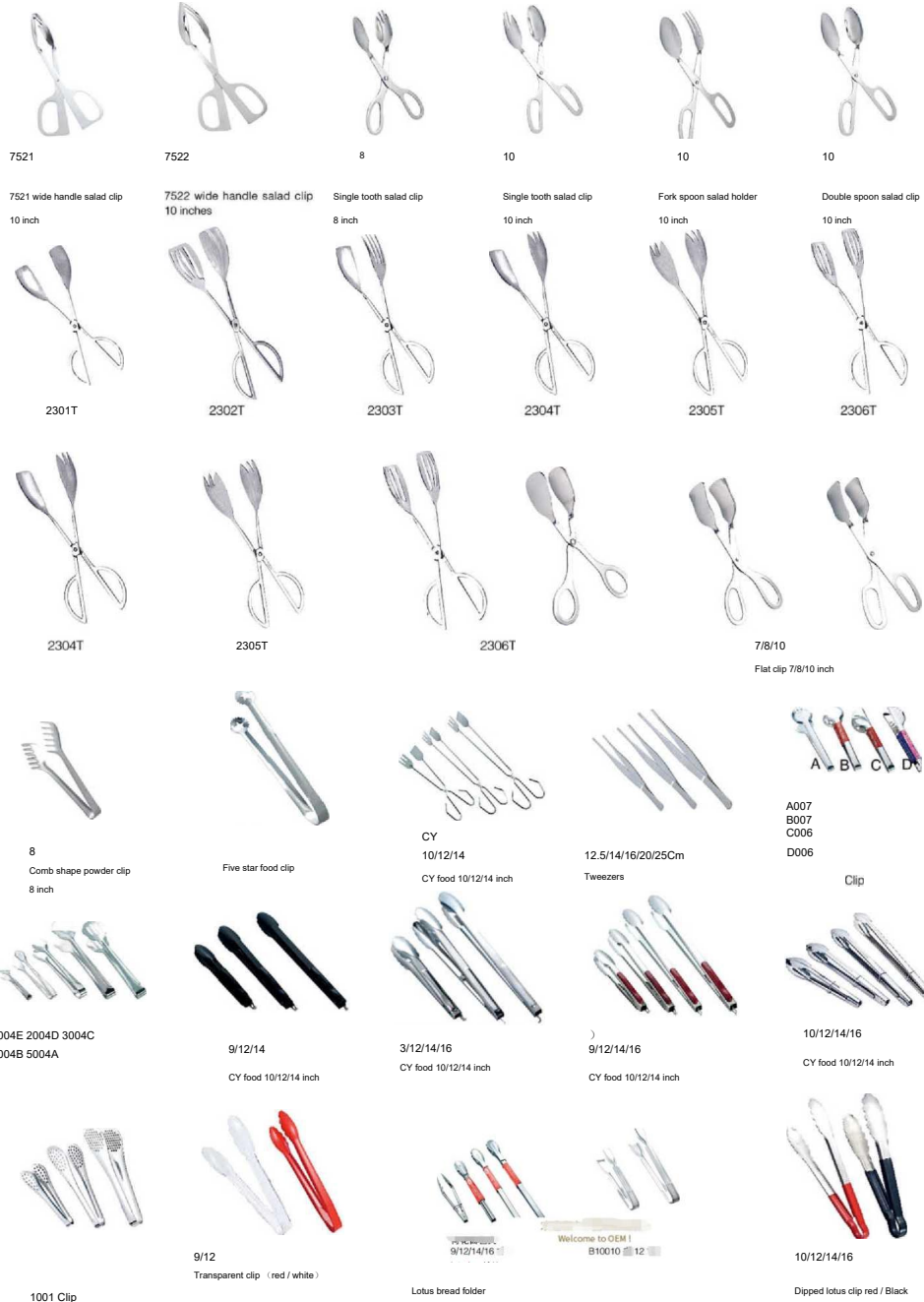


B886

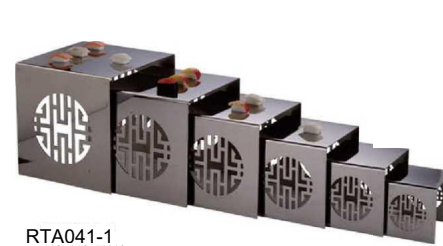


B002

Welcome to OEM I



Welcome customers to map sample order!



RTA041-1  
110x110xH110mm  
140x140xH140mm  
170x170xH170mm  
200x200xH200mm  
230x230xH230mm  
260x260xH260mm



RTA041-3  
110x110xH110mm  
140x140xH140mm  
170x170xH170mm  
200x200xH200mm  
230x230xH230mm  
260x260xH260mm



RTA028-2  
^230xH600mm



R1A028-3  
230xH770mm



I MUZO- 1]



RTA028-11  
^230xH500mm



RTA032-7  
220x140xH320mm

^330xH800mm

ners to map sample order!



RT816B  
: 1.0/1.5/2.0L



RT817B  
: 1.0/1.5/2.0L



RT820B  
: 1.0/1.5/2.0/2.2/2.5L



RT2802  
: 12/1.5/2.0L



RT828  
: 1.2/1.5/2.0L



RT2831  
1.2/1.5/2.0L



RT816  
: 1.0/1.5/2.0L



RT816A  
: 1.0/1.5/2.0L



RT819  
: 1.0/1.5/2.0L



181



1.5/2L



1.5/2L



RT820 : 1.0/1.5/2.0L



RT716  
容量: 1.2/1.5/2.0L



RT-8816  
: 1.2/1.5/2.0L



180 : 1/1.5/2L



1/1.5/2L



: 0.25/0.5/1.0L



: 0.35/0.5/1.0L



RT-8817 : 1.2/1.5/2.0L



240\*180\*240mm



: 0.4L (3个) / 0.8L (6个)



Model:RT-1.5L/2L/3L  
V5 World Cup

colour:Red. Yellow. Blue. Green. Gold  
Size:14X13X41Cm(1.5L)  
16X15X45Cm(2L)  
16X18X51 Cm(3L)



Model:RT-1.5L/3L  
V8

colour:Red. Yellow. Blue. Green. Gold Size:  
16X15X46Cm ( 1.5L)  
19X20X58Cm(3L)



Model:RT-SHW-666SA

PU  
PU SS insulation bucket

Size:10/20/30/40/50L



Model:RT-SHW-666SB



Model:RT-SHW-888SA

SS heat preservation  
Size: 47X38X37Cm(16L)



Model:RT-SHW-888SB

Wood grain heat preservation cooker  
Size:47X38X37Cm(16L)



Model:RT-1.5L/3L  
V12JE

V12 bar lamp

colour:Red. Yellow. Blue. Green. Gold  
Sized 8X17X50Cm(1.5L)  
21X19X59Cm(3L)



Model:RT-1.5L/3L  
V8 Ares

V8 axe

colour: Red. Yellow. Blue. Green. Gold  
Size:14X13X50Cm(1.5L)



Model:RT-1.5L/3L  
Metal foot

colour: Red. Yellow. Blue. Green. Gold  
Size: 13X13X45Cm(1.5L)  
15.5X15.5X52.5(3L)



SD-45A

MILK BUBBLE WATER BOILER	
MODEL	SX-45A
SIZE	280*280*73
PA	0.1-0.4MPa
V	12L
1#	80L/H
W	3000W
V	220V/240V
HZ	50/60HZ

Good insulation tea

Size: 10/18/30/40/50/60L



MILK BUBBLE WATER BOILER		MILK BUBBLE WATER BOILER		MILK BUBBLE WATER BOILER	
MODEL	DK-20A	MODEL	DK-30A	MODEL	DK-50A
SIZE	190*260*505mm	SIZE	190*240*630	SIZE	190*340
PA	0.1-0.4MPa	PA	0.1-0.4MPa	PA	0.1-0.4MPa
V	8L	V	10L	V	20L
1#	80L/H	1#	50L/H	1#	50L/H
W	1500W	W	2000W	W	3000W
V	220V/240V	V	220V/240V	V	220V/240V



8L  
8L milk tea barrel



10L  
10L milk tea barrel



10L  
10L milk tea barrel



12L  
12L milk tea barrel



SD-20A

MILK BUBBLE WATER BOILER

MODEL	DK-20A
SIZE	190*260*505mm
PA	0.1-0.4MPa
V	8L
1#	80L/H

SD-30A

MILK BUBBLE WATER BOILER

MODEL	DK-30A
SIZE	190,240*300mm
PA	0.1-0.4MPa
V	10L
1#	50L/H

SD-50A

MILK BUBBLE WATER BOILER

OK-50A

190\*340\*740mm

0.1-0.4MPa 20L

50L/H 3000W

220V/240V



Heat milk tea bucket :

SD-06401 :

MILK BUBBLE WATER BOILER	
MODEL	RX-50A
SIZE	280*280*73
PA	0.1-0.4MPa
V	20L
1#	50L/H
W	3000W
V	220V/240V
HZ	50/60HZ



Champagne bucket  
Size: 25 x 22.5cm

21 x 21cm



Champagne bucket

Size: 25 x 22.5cm

21 x 21cm



Size: 19x22x 0.8cm/15x 17.5 x 0.8cm

diameter:27cm



RT889A  
: 1.0/2.0/3.0L



RT756  
: 1.0/1.4/2.0L



RT757  
: 1.0/1.4/2.0L



RT887  
: 1.0/2.0/3.0L



RT888  
: 1.0/1.4/2.0L



RT890  
: 1.0/1.4/2.0L



RT2274  
: 25x25x19.2Hcm



RT2275  
: 12.1x12.15x18Hcm



RT2276  
: 11x11x19.3Hcm



RT2277  
: 31x24.5x21 Hem



RT2270  
: 1.0/2.0L



RT2271 : 1.0/2.0L



RT904  
: 1.0/2.0/3.0L



RT898  
: 18x18x20Hcm



RT896  
: 20x13.5x20Hcm



RT897: 19x13 5x21Hcm



RT895  
: 18.4x14x20Hcm



RT885  
: 1.0/2.0/3.0L



Welcome to OEM!

RT889  
: 1.0/2.0L



RTA115-1  
190xH220mm  
170xH170mm



RTA115-4  
270xH250mm



RTA115-5



RTA115-6  
190xH220mm



RTA115-7  
190xH220mm  
150xH175mm



RTA115-13  
220xH250mm  
200xH750mm  
200xH610mm

RTA115-14  
  
200xH220mm  
  
200xH750mm  
  
200xH610mm

RTA115-15:  
230xH228mm  
  
200xH750mm  
  
200xH610mm

RTA115-16  
  
190xH220mm  
  
195xH750mm

RTA115-17  
230xH250mm  
250xH660mm  
250xH800mm

RTA115-18  
  
230xH240mm  
  
200xH690mm



RTA116-1  
H440mm  
12pcs

RTA116-2  
H440mm/H330mm  
12pcs

RTA116-3  
H440mm/H330mm  
12pcs

RTA116-4  
H360mm  
12pcs



RTA116-5  
H350mm  
12pcs

RTA116-6  
H350mm  
12pcs

RTA116-7  
H260mm  
12pcs

RTA116-8  
H260mm  
12pcs



RTA116-17  
H240mm  
12pcs

RTA116-18

RTA116-19

RTA116-20  
H300mm  
H350mm



(04)  
(04)Siyi/Tai Body SathnAA Stew Sauce Pot Wit Composite Bottom

Φ200XH200	1.0	4	6
Φ200XH250	1.0	4	12
Φ220XH250	1.0	4	17
Φ240XH280	1.0	4	21
Φ260XH300	1.0	4	25
Φ280XH320	1.0	4	31
Φ300XH340	1.0	4	36
Φ320XH360	1.0	4	45
Φ360XH380	1.0	4	50
Φ400XH400	1.0	4	71
Φ450XH450	1.2	5	98
Φ500XH500	1.2	5	115
Φ500XH600	1.2	5	130
Φ550XH600	1.2	5	143
Φ550XH700	1.2	5	166
Φ600XH600	1.2	5	170
Φ600XH700	1.2	5	198
Φ600XH800	1.2	5	225



(03)  
(03)Si TM Body daanEM StelW Sauce Pot g Composite Bottom

0200XH200 1.0	4	6	0200XH200 1.0	4	6
(P200XH250 1.0	4	12	0200XH250 1.0	4	12
0220XH250 1.0	4	17	0220XH250 1.0	4	17
0240XH280 1.0	4	21	0240XH280 1.0	4	21
0260XH300 1.0	4	25	0260XH300 1.0	4	25
0280XH320 1.0	4	31	0280XH320 1.0	4	31
0300XH340 1.0	4	36	0300XH340 1.0	4	36
0320XH360 1.0	4	45	0320XH360 1.0	4	45
0360XH380 1.0	4	50	(P360XH380 1.0	4	50
0400XH400 1.0	4	71	0400XH400 1.0	4	71
0450XH450 1.2	5	98	(P450XH450 1.2	5	98
0500XH500 1.2	5	115	0500XH500 1.2	5	115
0500XH600 1.2	5	130	(P500XH600 1.2	5	130
0550XH600 1.2	5	143	0550XH600 1.2	5	143
0550XH700 1.2	5	166	(P550XH700 1.2	5	166
0600XH600 1.2	5	170	0600XH600 1.2	5	170
0600XH700 1.2	5	198	(P600XH700 1.2	5	198
0600XH800 1.2	5	225	0600XH800 1.2	5	225



Model	Product size	Pot body thickness	Of thick
101501	120XH50	0.8mm	3mm
101502	140XH55	0.8mm	3mm
101503	160XH60	0.8mm	3mm
101504	180XH65	0.8mm	3mm
101505	200XH70	0.8mm	3mm
101506	220XH75	0.8mm	3mm
101507	240XH80	0.8mm	3mm
101508	260XH85	0.8mm	3mm
101509	280XH95	0.8mm	3mm
101510	300XH100	0.8mm	3mm



04  
S/S composite bottom hiDU body sauce pan

Model	Product size	Pot body thickness	Of thick
101611	120XH75	0.8mm	3mm
101612	140XH85	0.8mm	3mm
101613	160XH95	0.8mm	3mm
101614	180XH110	0.8mm	3mm
101615	200XH125	0.8mm	3mm
101616	220XH135	0.8mm	3mm
101617	240XH140	0.8mm	3mm
101618	260XH150	0.8mm	3mm
101609	280XH160	0.8mm	3mm
101620	200XH180	0.8mm	3mm



(03)raSiyi/Short Body Sumaa StelW Pot Wit Composite Bottom

Size (mm)	Body Thickness(mm)	Thicknss(mm)	Capacity
Φ250XH180	1.0	4	9
Φ300XH200	1.0	4	14
Φ320XH220	1.0	4	17
Φ340XH240	1.0	4	22
Φ360XH240	1.0	4	24
Φ380XH260	1.0	4	28
Φ400XH260	1.0	4	32
Φ450XH280	1.0	4	44
Φ500XH300	1.0	4	58
Φ550XH350	1.0	5	83
Φ600XH400	1.0	5	113



(03)032yiy/TU Body SumMa Suw Sas Pot Wit Composite Bottom

Size (mm)	Body Thickness(mm)	Thicknss(mm)
Φ120XH75	0.8	3
Φ140XH85	0.8	3
Φ160XH100	0.8	3
Φ180XH110	0.8	3
Φ200XH125	0.8	3
Φ220XH135	0.8	3
Φ240XH140	0.8	3
Φ260XH150	0.8	3
Φ280XH160	0.8	3
Φ300XH180	0.8	3



(03) stainless steel composite bottom body sauce pan

Model	Product size	Pot body thickness	Of thick
101601	120XH50	0.8mm	3mm
101602	140XH55	0.8mm	3mm
101603	160XH60	0.8mm	3mm
101604	180XH65	0.8mm	3mm
101605	200XH75	0.8mm	3mm
101606	220XH75	0.8mm	3mm
101607	240XH80	0.8mm	3mm
101608	260XH85	0.8mm	3mm
101609	280XH95	0.8mm	3mm
101610	300XH100	0.8mm	3mm



(03) stainless steel composite bottom hiDU juice pot

Model	Product size	Pot body thickness	Of thick
101511	120XH75	0.8mm	3mm
101512	140XH85	0.8mm	3mm
101513	160XH95	0.8mm	3mm
101514	180XH110	0.8mm	3mm
101515	200XH125	0.8mm	3mm
101516	220XH135	0.8mm	3mm
101517	240XH140	0.8mm	3mm
101518	260XH150	0.8mm	3mm
101519	280XH160	0.8mm	3mm
101520	200XH180	0.8mm	3mm